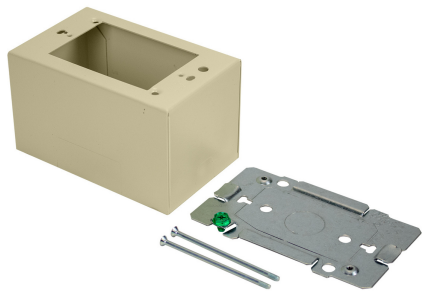




Wiremold  
**STL EXTRA DEEP BOX 2400 IVORY**  
Part No. CV2444



2400® Series Raceway is a single compartment raceway designed for communication or power applications and ideal for use in classrooms, offices, and hotel applications, or anywhere a small low profile raceway is needed. 2400D® Series Divided Raceway is a low profile steel raceway for use where a limited number of power and low voltage cables are required in the same raceway.

## Features & Benefits

One-gang device box with extra depth to allow installation of cabling that requires greater bend radius and storage. Cover has one twistout for 2400 Series Raceway on each side and one twistout for 500 and 700 Series Raceway on the top and bottom.

Accepts industry standard faceplates for electrical and communication devices.

NOTE: Accepts NEMA single-gang standard faceplates.

Certified to Canadian Safety Standards for sale in Canada. When ordering this product for Canada, add "C" to the beginning of the part number to denote Canadian versions, i.e. "CV2444" or "C2444-FW".

## Specifications

### General Info

Product Line	Wiremold	Color	Ivory
UPC Number	786776563740	Country Of Origin	United States
Product Series	2400 Series	Installation Location	On Wall
Application Sector	Commercial	Warranty Type	1-Year from Installation or 2-Years from Day of Sale
Type	Raceway Device Box		

### Dimensions

Product Width US	2.875 in	Product Weight US	0.05 lb
Product Depth US	2.75 in	Product Length US	4.625 in

Knockout Size	1 in, 1/2 in
---------------	--------------

Listing Agencies / 3rd Party Agencies

cULus ListingNumber	E41751	cULus Listed	Yes
---------------------	--------	--------------	-----

Additional Information

RoHS Compliant	Yes
----------------	-----

Technical Information

Is Pre-Wired	No	Number of Gangs	1
--------------	----	-----------------	---

Indoor/Outdoor	Indoor
----------------	--------