



Main

Range of Product	Modicon M171
Product or Component Type	Communication module
Communication port protocol	CAN2.B

Complementary

Integrated connection type	CAN port wire crimp - twisted pair
Physical interface	Twisted pair
Supply	Via base board EVD/EVC
Product Compatibility	Logic controller M172 performance Logic controller M171 performance
Net Weight	0.17 lb(US) (0.077 kg)

Environment

Product Certifications	CE[RETURN]CSA[RETURN]cURus[RETURN]EAC
Marking	CE
IP Degree of Protection	IP20
Ambient Air Temperature for Operation	14...131 °F (-10...55 °C)
Ambient Air Temperature for Storage	-4...185 °F (-20...85 °C)
Relative Humidity	10...90 % without condensation

Ordering and shipping details

Category	22537-M171 / M172 HVAC CONTROLLERS
Discount Schedule	PC12
GTIN	3606480752421
Returnability	No
Country of origin	IT

Packing Units

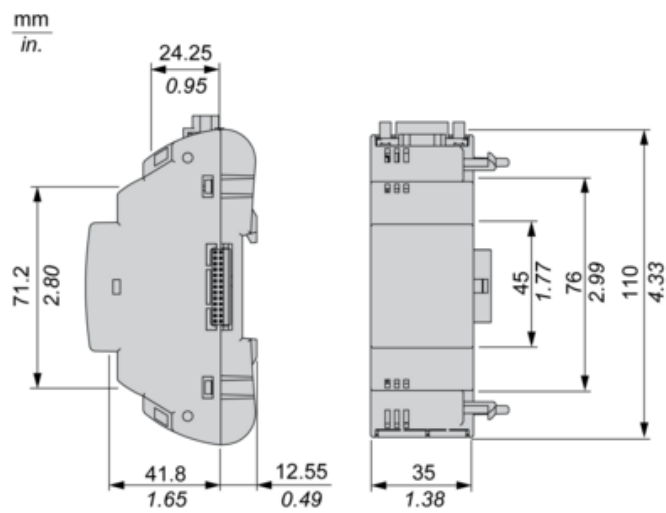
Unit Type of Package 1	PCE
Number of Units in Package 1	1
Package 1 Height	5.12 in (13.000 cm)
Package 1 Width	3.58 in (9.100 cm)
Package 1 Length	7.28 in (18.500 cm)
Package 1 Weight	6.38 oz (181.000 g)
Unit Type of Package 2	S02
Number of Units in Package 2	6
Package 2 Height	5.91 in (15.000 cm)
Package 2 Width	11.81 in (30.000 cm)

Package 2 Length	15.75 in (40.000 cm)
Package 2 Weight	2.90 lb(US) (1.315 kg)

Offer Sustainability

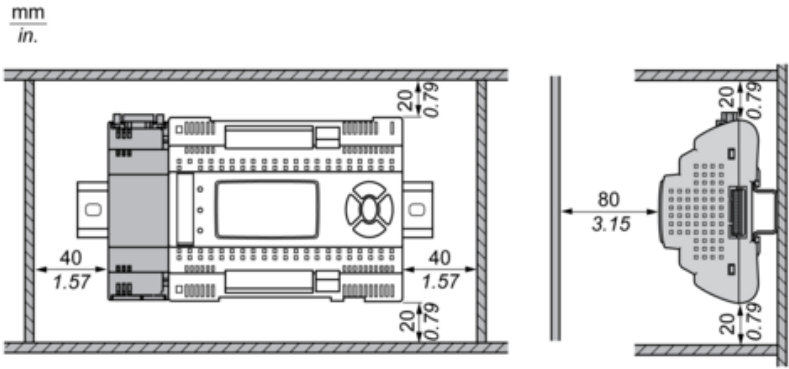
California proposition 65	WARNING: This product can expose you to chemicals including: Lead and lead compounds, which is known to the State of California to cause cancer and birth defects or other reproductive harm. For more information go to www.P65Warnings.ca.gov
REACH Regulation	 REACH Declaration
EU RoHS Directive	Pro-active compliance (Product out of EU RoHS legal scope)
Mercury free	Yes
China RoHS Regulation	 China RoHS Declaration
RoHS exemption information	 Yes
WEEE	The product must be disposed on European Union markets following specific waste collection and never end up in rubbish bins.
Upgradeability	Upgradeable through digital modules and upgraded components

Dimensions

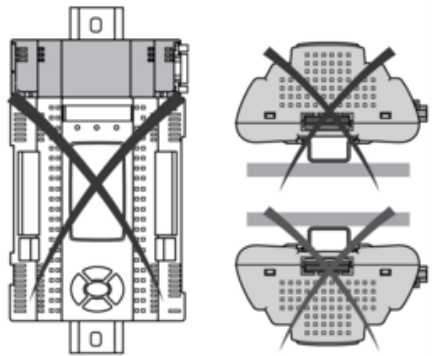


Mounting and Clearance

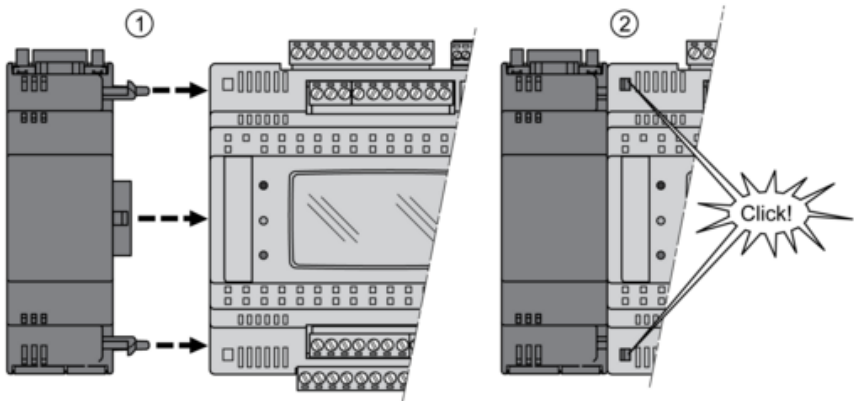
Clearance



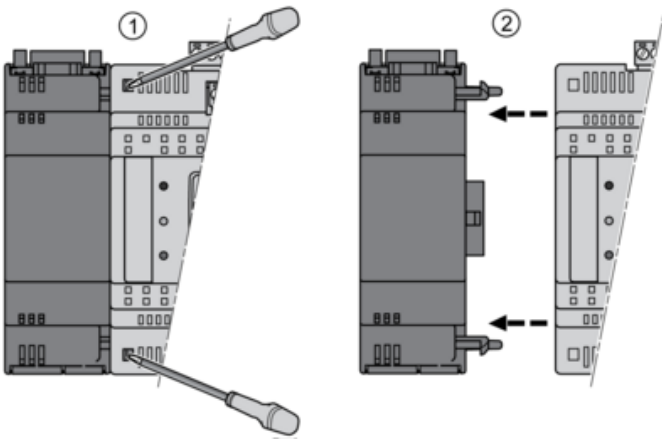
Misplacement



Mounting on Controller



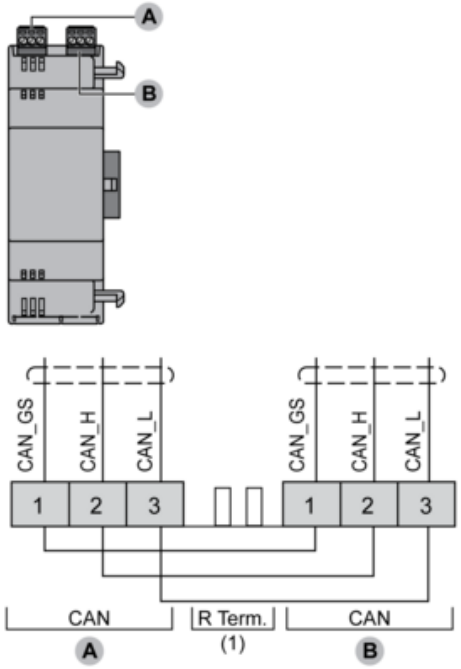
Dismounting



Connections and Schema

CAN Communication Module

TM171ACAN



(1) CAN terminal resistance.