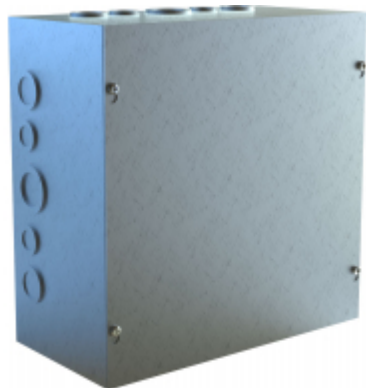




Quality Products. Service Excellence.

Type 1 Unpainted Galvanized Steel Junction Box *CSKOG Series*

Screw Cover and w/ Knockouts



Application

- Designed for general purpose indoor commercial use as a junction, pull or switch box.

Standards

- UL-50 Type 1
- CSA Type 1
- Complies with:
 - NEMA Type 1
 - IEC 60529, IP20

Construction

- Formed and spot welded from 16 gauge G90 steel.
- Flat steel covers fastened with plated steel screws.
- Keyhole slots permit cover to be lifted off without removing screws entirely.
- Easily removed knockouts on all 4 sides (see drawings for sizes and locations).
- Through holes in back for wall mounting.
- Grounding location embossed in body.

Finish

- Enclosure and cover are unpainted galvanized steel.



New and improved PDF part drawing files with more detail now available.

Click part number in table below to access PDF, DXF, and STEP files.

| Part No. | Enclosure | | |
|------------|-----------|-------|------|
| | H | W | D |
| CSKOG664 | 6.00 | 6.00 | 4.00 |
| CSKOG884 | 8.00 | 8.00 | 4.00 |
| CSKOG10104 | 10.00 | 10.00 | 4.00 |
| CSKOG12124 | 12.00 | 12.00 | 4.00 |
| CSKOG18124 | 18.00 | 12.00 | 4.00 |
| CSKOG666 | 6.00 | 6.00 | 6.00 |
| CSKOG886 | 8.00 | 8.00 | 6.00 |
| CSKOG10106 | 10.00 | 10.00 | 6.00 |
| CSKOG12126 | 12.00 | 12.00 | 6.00 |
| CSKOG16166 | 16.00 | 16.00 | 6.00 |
| CSKOG16168 | 16.00 | 16.00 | 8.00 |
| CSKOG12128 | 12.00 | 12.00 | 8.00 |

Data subject to change without notice

© 2022. Hammond Manufacturing Ltd. All rights reserved.