

Floor Boxes

SystemOne Recessed 2 and 4 Gang Floor Box Cover

For Use In Concrete Floors

Features

- 180 degree cover opening to lay flat and reduce tripping hazards
- Two large hide-away cable egress doors
- Die cast aluminum cover construction for enhanced durability
- UL ScrubWater Compliant
- ADA Compliant

Ordering Information

Style	Finish	UPC	Catalog Number
Surface Cover	Aluminum	783585527116	24GTCVRALUC

Listings

cULus Listed
Complies with UL514A Scrubwater
ADA Compliant

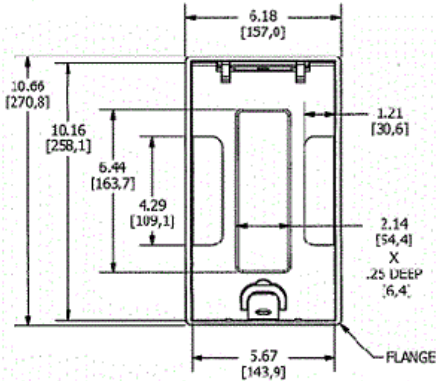
Specifications

Flange height	0.13 in.
Adjustment Range	0 - 1.0 inch
Load Rating	800 lbs. (w/ 2x safety factor)
Cover Finish	Aluminum powder paint
Egress Door Openings	4.29" x 1"
Cover Material	Die cast aluminum

Performance

Carpet Insert Pocket
6.44" x 2.14" x 0.25"

HUBBELL



Related Products

Compatible with CFB2G25,
CFB2G25CR, CFB2G30, CFB2G30CR,
CFB4G25, CFB4G25CR, CFB4G30 and
Cover Mounting Hardware Factory
Installed

Online Resources

Customer Sales Drawings
eCatalog
Installation Instructions

