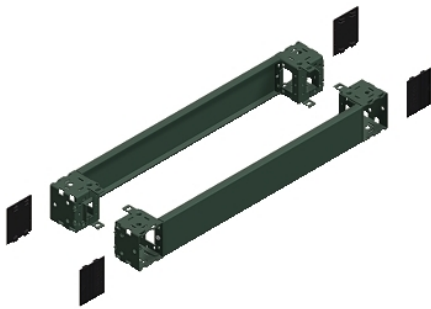


NSYSPF6100
Front & rear plinth, PanelSeT SFN, Spacial SF,
Spacial SM, for electrical enclosure W600mm,
plinth H100mm



Overview

Lead time	Usually Ships within 4 Weeks
-----------	------------------------------

Main

Range	Spacial
Accessory / separate part category	Enclosure accessory
Product or Component Type	Plinth front
Anwendung	PC application Electronic application Multi-purpose Compartmentalised application
Nennmaße des Gehäuses	-
Device composition	Fixing elements 4 corner cover 1 front panel 1 rear panel 4 corner
Range compatibility	Spacial Spacial SF Spacial Spacial SM Spacial Spacial SD Spacial Spacial S3D Spacial Spacial CRN
Mounting support	Plinth side panels

Complementary

Fixing mode	By fixing element - on structure
Color	Gray RAL 7022)
Surface Finish	Epoxy-polyester powder
Permanent permissible load	2866.01 lb(US) (1300 kg)
Height	3.94 in (100 mm)
Width	Nominal 23.62 in (600 mm)

Environment

IP degree of protection	IP30 complete plinth)
IK degree of protection	IK10

The information provided in this documentation contains general descriptions and/or technical characteristics of the products contained herein. This documentation is not intended as a substitute for and is not to be used for determining suitability or reliability of these products for specific user applications. It is the duty of any such user or integrator to perform the appropriate and complete risk analysis, evaluation and testing of the products with respect to the relevant specific application or use thereof. Neither Schneider Electric Industries SAS nor any of its affiliates or subsidiaries shall be responsible or liable for misuse of the information contained herein.

Ordering and shipping details

Category	80036-ENCLOSURE SYSTEMS ACCESSORIES
Discount Schedule	ES1
GTIN	3606485126562
Returnability	No
Country of origin	TN

Packing Units

Unit Type of Package 1	PCE
Number of Units in Package 1	1
Package 1 Height	4.33 in (11.000 cm)
Package 1 Width	7.87 in (20.000 cm)
Package 1 Length	24.21 in (61.500 cm)
Package 1 Weight	9.50 lb(US) (4.309 kg)
Unit Type of Package 2	PAM
Number of Units in Package 2	72
Package 2 Height	62.99 in (160.000 cm)
Package 2 Width	39.37 in (100.000 cm)
Package 2 Length	47.24 in (120.000 cm)
Package 2 Weight	712.64 lb(US) (323.248 kg)

Offer Sustainability

Sustainable offer status	Green Premium product
REACH Regulation	 REACH Declaration
EU RoHS Directive	Pro-active compliance (Product out of EU RoHS legal scope)
Mercury free	Yes
China RoHS Regulation	 China RoHS Declaration
RoHS exemption information	 Yes
Environmental Disclosure	 Product Environmental Profile
Circularity Profile	No need of specific recycling operations

Contractual warranty

Warranty	18 months
----------	-----------