

LED IN-WALL

Asymmetric Wall Light, 59 Lumens, 1.2 Watt
Cove, Under Cabinet & Millwork

Job Information		
Project Name		Type
Location		
Quantity		Date
Contact/Phone		
Notes		

Features

Body Construction

The body is constructed from machined aluminum which acts as a heat sink for the 1.2W LED. Fixture can be rotated 360° to a fixed position for directional asymmetrical lighting. Provided with toolless push in connector allows for daisy chain option, to be used with 18-2 AWG LVT cable (not provided). Suitable for indoor use only, dry and damp locations.

Housing

The LED asymmetric wall light is installed in an aluminum housing which allow for enclosed wiring and the fixture to be installed where insulation is present. Housing includes a strain relief to secure electrical cables and two torsion clips for enhanced rigidity to recessed surface.

Power Consumption

This fixture operate on 24V constant voltage. Remote power supply required (See back for driver options).

Voltage Drop

Contact your Liteline representative for voltage drop calculation guidelines.

Light Output

This recessed light outputs a warm white (3000 K) colour temperature which provides 59 lumens.

Beam Spread

The fixture LED provides lighting with 45 degree beam spread.

Dimming

100%-5% dimming with compatible electronic and magnetic dimming drivers.

Installation

When installing WLDR-1W in an insulated wall a vapour barrier (WL-VBE sold separately) and a pre-mounting plate (P-1750 sold separately) are required.

Applications

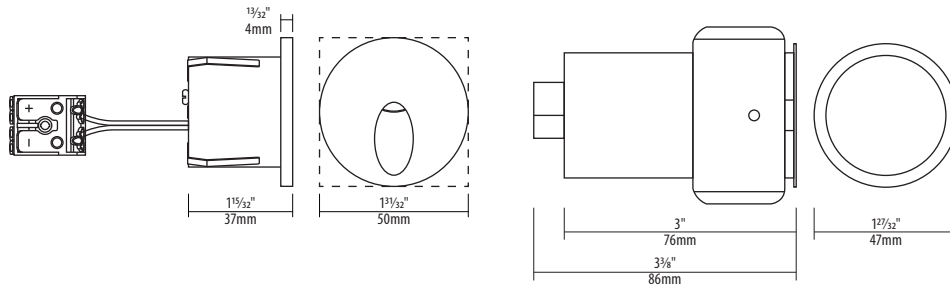
With the added directional control, this allows for multiple corridor/hallway sidewall recess lighting, in addition adding essential accent illumination for under cabinet, display and wall washing environments.

SPECIFICATION	
Approved Location	Damp
Beam Angle	45°
CCT	3000 K
Certification	cETLus
CRI	90+
Cut-hole	1 3/4" (44mm)
Dimming	Yes
Insulation Contact	Yes
Lumen	59
Lumens per Watt	50
Material	Aluminum
Max. Temp.	40°C
Min. Start Temp.	-20°C
Power Supply Type	Constant Voltage
Primary Voltage	24
Projected Life	35,000 hrs
Warranty	3 Years
Watt	1.2W



Description

This 1.2W asymmetric light provides quality illumination for ambient accent lighting in hallways, corridors, stairs and entrances. Powered by a 24V constant voltage power supply (sold separately). Fixture is IC rated, suitable for indoor use only.



Ordering Guide

Fixture Shape	Fixture Color
WLTD - <input type="text"/> - 1W30K - 90 - <input type="text"/>	
R : Round S : Square	ABK : Anodized Black AL : Brushed Aluminum FWH : Flat White



Highlighted option denotes QuickShip.

Accessories



WL-VBE
LED Wall Light Vapour Barrier.



P-1750
1 3/4" LED Wall Light Pre-mounting Plate.



LC-CRTL-DIM-1
OnCloud Smart Control with Dimmer, 2.4GHz.



LC-CRTL-3WAY-1
OnCloud Smart 3-Way Switch, 2.4GHz.

Notes: Accessories are sold separately. For additional options please consult your Liteline representative.

QuickShip option is available on orders of 100 pieces or less, and will ship within 2 business days. Options must be selected from QuickShip section to qualify. Due to our continued efforts to improve our products, product specifications are subject to change without notice.

Compatible Drivers

OnCloud

OnCloud Driver Kit



OC-HWB-60WSTEP-1C

100-240VAC, 60W, 1-Channel 24VDC OnCloud driver kit, powers and controls wireless dimming and on/off capability through WiZ app, Room Controller and smart speakers.

OnCloud Adapter



LC-DVR-CV96W1STEP-1C

24V, 1-Channel OnCloud adapter, controls dimming and on/off capability through WiZ app, Room Controller and smart speakers.

Power feed required



LED-HWB-DC21-6-PF

DC 2.1 to bare leads power feed. Maximum 10' to first fixture.

* Power feed required for all drivers with DC 2.1 jack.

Non Dimming Class II

Hardwire Drivers



LED-HWB-24V-24W

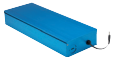
LED 24V, 24W Hardwire Box LED Driver with DC 2.1 jack.

LED-HWB-24V-36W

LED 24V, 36W Hard wire Box LED Driver with DC 2.1 jack.

LED-HWB-24V-60W

LED 24V, 60W Hard wire Box LED Driver with DC 2.1 jack.



LED-HWB-24V-100W

96W NON-Dimmable Electronic LED Hardwire Box, 24 VDC

Power feed required



LED-HWB-DC21-6-PF

DC 2.1 to bare leads power feed. Maximum 10' to first fixture.

* Power feed required for all drivers with DC 2.1 jack.

Dimming Class II

Electronic Hardwire Drivers – DC 2.1 – Powered by Lutron®



LED-HWB-DIM2-24-40

40W LED dimmable hardwire driver with DC 2.1 jack. 2-wire, 24V, powered by Lutron® Hi-lume® 1% 2-wire 120V LED driver.



LED-HWB-DIM3-24-40

40W LED dimmable hardwire driver with DC 2.1 jack. 3-wire, 24V, powered by Lutron® Hi-lume® 1% Ecosystem/3-wire LED driver.

Power feed required



LED-HWB-DC21-6-PF

DC 2.1 to bare leads power feed. Maximum 10' to first fixture.

* Power feed required for all drivers with DC 2.1 jack.

Electronic Hardwire Drivers – Hardwire



HWB-DIM-CDC-24V-30W

30W dimmable electronic hardwire driver, 24V.



HWB-DIM-CDC-24V-96W

96W dimmable electronic hardwire driver, 24V.



HWB-DIM-CDC-24V-60W

60W dimmable electronic hardwire driver, 24V.

Wiring Diagram

