

Cam-Lok™ J Series Connectors are specifically designed to meet the needs of demanding portable applications. J Series Plugs and Receptacles are the proven industry standard single pole connectors for reliability and service with added safety.

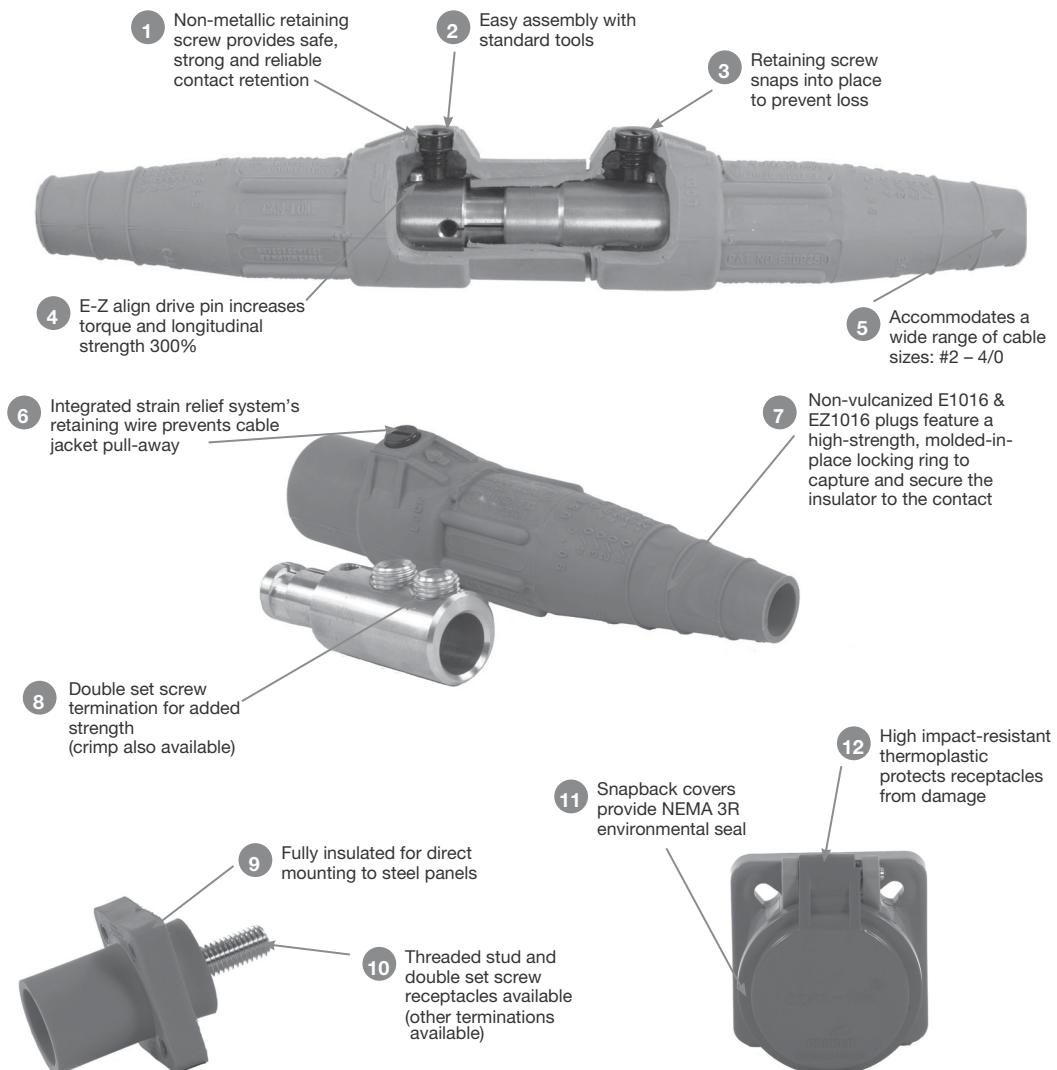
### Applications:

- J Series Plugs and Receptacles are specifically designed for industrial power distribution applications requiring quick, tool-free connections
- Ideal for portable power, power distribution, motors, generators, and entertainment applications
- J Series replaces traditional hard wiring while cutting downtime and maintenance
- J Series Connectors are insulated, shatter/crack-resistant and watertight, plus heat-, weather-, ozone-, oil-, and abrasion-resistant

### Certifications and Compliances:

- Listed to UL498, File No. E67181
- CSA certified to C22.2 No. 182.3 LR13963

### Features:



### Environmental Ratings:

- NEMA 3R or NEMA 4

### Standard Materials:

- Accepts cable sizes: #8 AWG - 750 MCM
- Insulator - elastomeric or rubber
- Contact - brass or copper

### Electrical Ratings:

- 600 Volts AC/DC
- 690 Amps continuous

### Temperature Ratings:

- -40°C to 105°C

# 11P Cam-Lok™ J Series E-Z1016 Plugs

NEMA 3R

**Cable Size #2 AWG - 2 / 0 600V AC/DC  
Up to 300A Continuous**

## J Series E-Z1016, Elastomeric, Non-vulcanized, Double Set Screw Connection

### Features:

- E-Z assembly and disassembly - no tools needed
- Double cam principle provides a positive, vibration-proof connection
- Self-compensating for wear
- No moving contact surfaces, eliminating arcing or burning
- Superior electro-mechanical connections
- Locked contacts will withstand a pulling force of 1,000 lbs.
- 1/3 of a turn assures a high pressure contact approaching 600 lbs. per sq. in., providing minimum resistance
- Contacts carefully machined from a high conductivity brass to a smooth sliding fit and easy locking action
- Watertight elastomeric insulators molded from colorfast material, color-coded for easy phase identification
- Recessed contacts protected by insulating jacket that extends beyond contact ends for safety
- Integrated strain relief system features a retaining wire that prevents cable jacket pull-away and bare conductor exposure
- Plugs feature a high strength, molded-in-place locking ring to capture and secure the insulator to the contact
- Accepts a wide range of cable sizes

### Testing and Code Compliance:

- Listed to UL498, File No. E67181
- CSA certified to C22.2 No. 182.3-M1987, File No. LR13963

### Material Characteristics:

- Insulator - TPE
- Environmental rating: NEMA 3R
- Temperature rating: -40°C to 105°C

### Ordering Information - Double Set Screw Non-vulcanized Male Plugs:



E-Z1016-8354

Cable Size	Color	Complete Cat. #	Contact Only Cat. #	Insulator Only Cat. #
#2 - 2 / 0	Black	E-Z1016-8350	A200630-1	E-Z200074-19
#2 - 2 / 0	Red	E-Z1016-8352	A200630-1	E-Z200074-21
#2 - 2 / 0	Green	E-Z1016-8354	A200630-1	E-Z200074-23
#2 - 2 / 0	White	E-Z1016-8355	A200630-1	E-Z200074-24
#2 - 2 / 0	Blue	E-Z1016-8356	A200630-1	E-Z200074-38
#2 - 2 / 0	Brown	E-Z1016-8357	A200630-1	E-Z200074-47
#2 - 2 / 0	Orange	E-Z1016-8353	A200630-1	E-Z200074-22
#2 - 2 / 0	Yellow	E-Z1016-8351	A200630-1	E-Z200074-20

### Ordering Information - Double Set Screw Non-vulcanized Female Plugs:

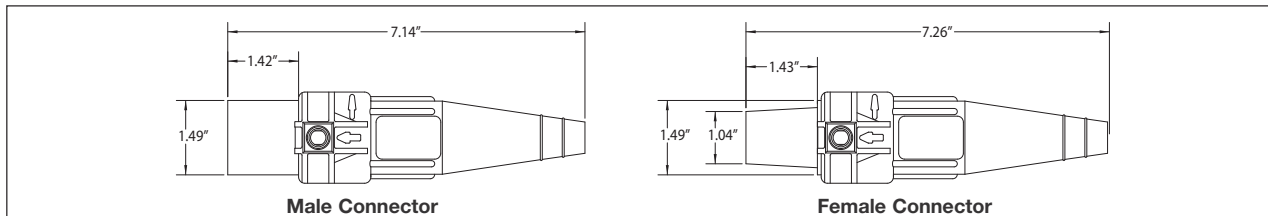


E-Z1016-8380

Cable Size	Color	Complete Cat. #	Contact Only Cat. #	Insulator Only Cat. #
#2 - 2 / 0	Black	E-Z1016-8375	A200640-3	E-Z200075-19
#2 - 2 / 0	Red	E-Z1016-8377	A200640-3	E-Z200075-21
#2 - 2 / 0	Green	E-Z1016-8379	A200640-3	E-Z200075-23
#2 - 2 / 0	White	E-Z1016-8380	A200640-3	E-Z200075-24
#2 - 2 / 0	Blue	E-Z1016-8381	A200640-3	E-Z200075-44
#2 - 2 / 0	Brown	E-Z1016-8382	A200640-3	E-Z200075-52
#2 - 2 / 0	Orange	E-Z1016-8378	A200640-3	E-Z200075-22
#2 - 2 / 0	Yellow	E-Z1016-8376	A200640-3	E-Z200075-20

To order single packaged products, add a "K" suffix to the complete catalog number.

### Dimensions:



Male Connector

Female Connector

**Crouse-Hinds**  
by **E.T.N.**

# Cam-Lok™ J Series E-Z1016 Plugs

NEMA 3R

11P

**Cable Size 2 / 0 - 4 / 0 600V AC/DC  
Up to 400A Continuous**

## J Series E-Z1016, Elastomeric, Non-vulcanized, Double Set Screw Connection

### Features:

- E-Z assembly and disassembly - no tools needed
- Double cam principle provides a positive, vibration-proof connection
- Self-compensating for wear
- No moving contact surfaces, eliminating arcing or burning
- Superior electro-mechanical connections
- Locked contacts will withstand a pulling force of 1,000 lbs.
- 1/3 of a turn assures a high pressure contact approaching 600 lbs. per sq. in., providing minimum resistance
- Contacts carefully machined from a high conductivity brass to a smooth sliding fit and easy locking action
- Watertight elastomeric insulators molded from colorfast material, color-coded for easy phase identification
- Recessed contacts protected by insulating jacket that extends beyond contact ends for safety
- Integrated strain relief system features a retaining wire that prevents cable jacket pull-away and bare conductor exposure
- Plugs feature a high strength, molded-in-place locking ring to capture and secure the insulator to the contact
- Accepts a wide range of cable sizes

### Testing and Code Compliance:

- Listed to UL498, File No. E67181
- CSA certified to C22.2 No. 182.3-M1987, File No. LR13963

### Material Characteristics:

- Insulator - TPE
- Environmental rating: NEMA 3R
- Temperature rating: -40°C to 105°C

### Ordering Information - Double Set Screw Non-vulcanized Male Plugs:



E-Z1016-8368

Cable Size	Color	Complete Cat. #	Contact Only Cat. #	Insulator Only Cat. #
2 / 0 - 4 / 0	Black	E-Z1016-8362	A200639-1	E-Z200074-60
2 / 0 - 4 / 0	Red	E-Z1016-8364	A200639-1	E-Z200074-62
2 / 0 - 4 / 0	Green	E-Z1016-8366	A200639-1	E-Z200074-64
2 / 0 - 4 / 0	White	E-Z1016-8367	A200639-1	E-Z200074-65
2 / 0 - 4 / 0	Blue	E-Z1016-8368	A200639-1	E-Z200074-66
2 / 0 - 4 / 0	Brown	E-Z1016-8369	A200639-1	E-Z200074-67
2 / 0 - 4 / 0	Orange	E-Z1016-8365	A200639-1	E-Z200074-63
2 / 0 - 4 / 0	Yellow	E-Z1016-8363	A200639-1	E-Z200074-61

### Ordering Information - Double Set Screw Non-vulcanized Female Plugs:

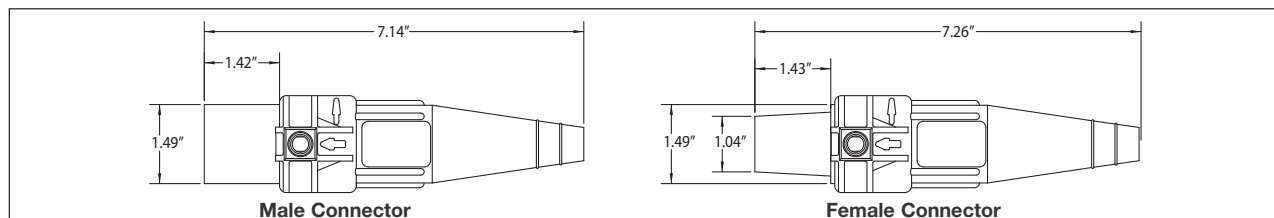


E-Z1016-8389

Cable Size	Color	Complete Cat. #	Contact Only Cat. #	Insulator Only Cat. #
2 / 0 - 4 / 0	Black	E-Z1016-8387	A200641-1	E-Z200075-60
2 / 0 - 4 / 0	Red	E-Z1016-8389	A200641-1	E-Z200075-62
2 / 0 - 4 / 0	Green	E-Z1016-8391	A200641-1	E-Z200075-64
2 / 0 - 4 / 0	White	E-Z1016-8392	A200641-1	E-Z200075-65
2 / 0 - 4 / 0	Blue	E-Z1016-8393	A200641-1	E-Z200075-66
2 / 0 - 4 / 0	Brown	E-Z1016-8394	A200641-1	E-Z200075-67
2 / 0 - 4 / 0	Orange	E-Z1016-8390	A200641-1	E-Z200075-63
2 / 0 - 4 / 0	Yellow	E-Z1016-8388	A200641-1	E-Z200075-61

To order single packaged products, add a "K" suffix to the complete catalog number.

### Dimensions:



## Crouse-Hinds

by E.T.N

11P

# 11P Cam-Lok™ J Series E-Z1016 Plugs

NEMA 3R

**Cable Size #2 - #1 AWG 600V AC/DC  
Up to 190A Continuous**

## J Series E-Z1016, Elastomeric, Non-vulcanized, Crimp Connection

### Features:

- E-Z assembly and disassembly - no tools needed
- Double cam principle provides a positive, vibration-proof connection
- Self-compensating for wear
- No moving contact surfaces, eliminating arcing or burning
- Superior electro-mechanical connections
- Locked contacts will withstand a pulling force of 1,000 lbs.
- 1/3 of a turn assures a high pressure contact approaching 600 lbs. per sq. in., providing minimum resistance
- Contacts carefully machined from a high conductivity brass to a smooth sliding fit and easy locking action
- Watertight elastomeric insulators molded from colorfast material, color-coded for easy phase identification
- Recessed contacts protected by insulating jacket that extends beyond contact ends for safety
- Integrated strain relief system features a retaining wire that prevents cable jacket pull-away and bare conductor exposure
- Plugs feature a high strength, molded-in-place locking ring to capture and secure the insulator to the contact

### Testing and Code Compliance:

- Listed to UL498, File No. E67181
- CSA certified to C22.2 No. 182.3-M1987, File No. LR13963

### Material Characteristics:

- Insulator - TPE
- Environmental rating: NEMA 3R
- Temperature rating: -40°C to 105°C

### Ordering Information - Crimp Non-vulcanized Male Plugs:



E-Z1016-8006

Cable Size	Color	Complete Cat. #	Contact Only Cat. #	Insulator Only Cat. #
#2 - #1	Black	E-Z1016-8006	A200036-18	E-Z200074-19
#2 - #1	Red	E-Z1016-8008	A200036-18	E-Z200074-21
#2 - #1	Green	E-Z1016-8010	A200036-18	E-Z200074-23
#2 - #1	White	E-Z1016-8011	A200036-18	E-Z200074-24
#2 - #1	Blue	E-Z1016-7700	A200036-18	E-Z200074-38
#2 - #1	Brown	E-Z1016-7701	A200036-18	E-Z200074-47
#2 - #1	Orange	E-Z1016-8009	A200036-18	E-Z200074-22
#2 - #1	Yellow	E-Z1016-8007	A200036-18	E-Z200074-20

### Ordering Information - Crimp Non-vulcanized Female Plugs:

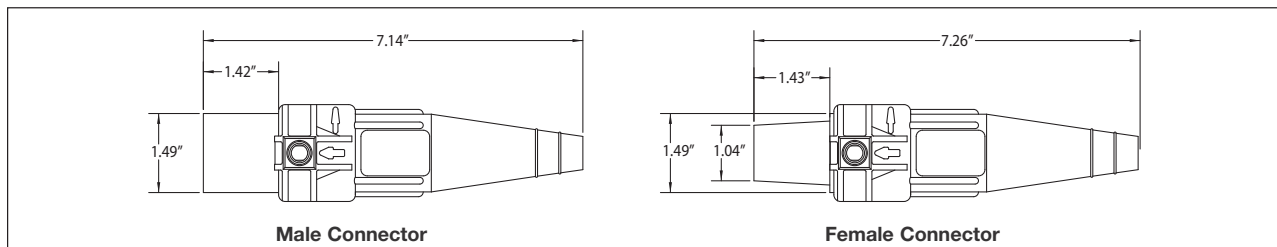


E-Z1016-8058

Cable Size	Color	Complete Cat. #	Contact Only Cat. #	Insulator Only Cat. #
#2 - #1	Black	E-Z1016-8056	A200037-23	E-Z200075-19
#2 - #1	Red	E-Z1016-8058	A200037-23	E-Z200075-21
#2 - #1	Green	E-Z1016-8060	A200037-23	E-Z200075-23
#2 - #1	White	E-Z1016-8061	A200037-23	E-Z200075-24
#2 - #1	Blue	E-Z1016-7716	A200037-23	E-Z200075-44
#2 - #1	Brown	E-Z1016-7717	A200037-23	E-Z200075-52
#2 - #1	Orange	E-Z1016-8059	A200037-23	E-Z200075-22
#2 - #1	Yellow	E-Z1016-8057	A200037-23	E-Z200075-20

To order single packaged products, add a "K" suffix to the complete catalog number.

### Dimensions:



Male Connector

Female Connector

**Crouse-Hinds**  
by **F.T.M.**

# Cam-Lok™ J Series E-Z1016 Plugs

NEMA 3R

11P

**Cable Size 1 / 0 - 2 / 0 600V AC/DC  
Up to 300A Continuous**

## J Series E-Z1016, Elastomeric, Non-vulcanized, Crimp Connection

### Features:

- E-Z assembly and disassembly
- Double cam principle provides a positive, vibration-proof connection
- Self-compensating for wear
- No moving contact surfaces, eliminating arcing or burning
- Superior electro-mechanical connections
- Locked contacts will withstand a pulling force of 1,000 lbs.
- 1/3 of a turn assures a high pressure contact approaching 600 lbs. per sq. in., providing minimum resistance
- Contacts carefully machined from a high conductivity brass to a smooth sliding fit and easy locking action
- Watertight elastomeric insulators molded from colorfast material, color-coded for easy phase identification
- Recessed contacts protected by insulating jacket that extends beyond contact ends for safety
- Integrated strain relief system features a retaining wire that prevents cable jacket pull-away and bare conductor exposure
- Plugs feature a high strength, molded-in-place locking ring to capture and secure the insulator to the contact

### Testing and Code Compliance:

- Listed to UL498, File No. E67181
- CSA certified to C22.2 No. 182.3-M1987, File No. LR13963

### Material Characteristics:

- Insulator - TPE
- Environmental rating: NEMA 3R
- Temperature rating: -40°C to 105°C

### Ordering Information - Crimp Non-vulcanized Male Plugs:



E-Z1016-8021

Cable Size	Color	Complete Cat. #	Contact Only Cat. #	Insulator Only Cat. #
1 / 0 - 2 / 0	Black	E-Z1016-8018	A200038-11	E-Z200074-60
1 / 0 - 2 / 0	Red	E-Z1016-8020	A200038-11	E-Z200074-62
1 / 0 - 2 / 0	Green	E-Z1016-8022	A200038-11	E-Z200074-64
1 / 0 - 2 / 0	White	E-Z1016-8023	A200038-11	E-Z200074-65
1 / 0 - 2 / 0	Blue	E-Z1016-7704	A200038-11	E-Z200074-66
1 / 0 - 2 / 0	Brown	E-Z1016-7705	A200038-11	E-Z200074-67
1 / 0 - 2 / 0	Orange	E-Z1016-8021	A200038-11	E-Z200074-63
1 / 0 - 2 / 0	Yellow	E-Z1016-8019	A200038-11	E-Z200074-61

### Ordering Information - Crimp Non-vulcanized Female Plugs:

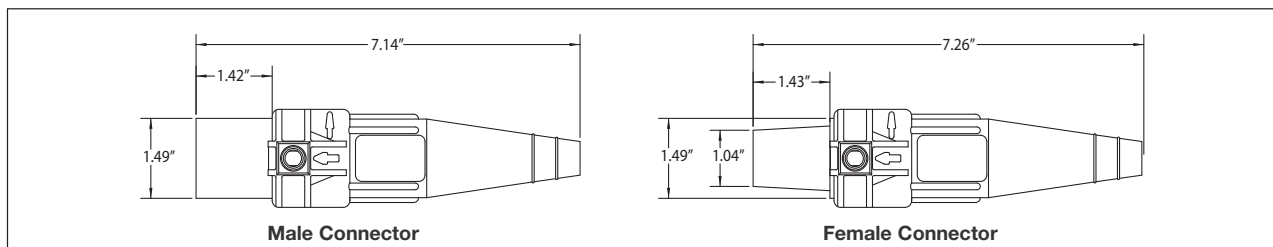


E-Z1016-8073

Cable Size	Color	Complete Cat. #	Contact Only Cat. #	Insulator Only Cat. #
1 / 0 - 2 / 0	Black	E-Z1016-8068	A200035-17	E-Z200075-60
1 / 0 - 2 / 0	Red	E-Z1016-8070	A200035-17	E-Z200075-62
1 / 0 - 2 / 0	Green	E-Z1016-8072	A200035-17	E-Z200075-64
1 / 0 - 2 / 0	White	E-Z1016-8073	A200035-17	E-Z200075-65
1 / 0 - 2 / 0	Blue	E-Z1016-7720	A200035-17	E-Z200075-66
1 / 0 - 2 / 0	Brown	E-Z1016-7721	A200035-17	E-Z200075-67
1 / 0 - 2 / 0	Orange	E-Z1016-8071	A200035-17	E-Z200075-63
1 / 0 - 2 / 0	Yellow	E-Z1016-8069	A200035-17	E-Z200075-61

To order single packaged products, add a "K" suffix to the complete catalog number.

### Dimensions:



**Crouse-Hinds**  
by **E.T.N**

11P

# 11P Cam-Lok™ J Series E-Z1016 Plugs

NEMA 3R

**Cable Size 3 / 0 - 4 / 0 600V AC/DC  
Up to 400A Continuous**

## J Series E-Z1016, Elastomeric, Non-vulcanized, Crimp Connection

### Features:

- E-Z assembly and disassembly - no tools needed
- Double cam principle provides a positive, vibration-proof connection
- Self-compensating for wear
- No moving contact surfaces, eliminating arcing or burning
- Superior electro-mechanical connections
- Locked contacts will withstand a pulling force of 1,000 lbs.
- 1/3 of a turn assures a high pressure contact approaching 600 lbs. per sq. in., providing minimum resistance
- Contacts carefully machined from a high conductivity brass to a smooth sliding fit and easy locking action
- Watertight elastomeric insulators molded from colorfast material, color-coded for easy phase identification
- Recessed contacts protected by insulating jacket that extends beyond contact ends for safety
- Integrated strain relief system features a retaining wire that prevents cable jacket pull-away and bare conductor exposure
- Plugs feature a high strength, molded-in-place locking ring to capture and secure the insulator to the contact

### Testing and Code Compliance:

- Listed to UL498, File No. E67181
- CSA certified to C22.2 No. 182.3-M1987, File No. LR13963

### Material Characteristics:

- Insulator - TPE
- Environmental rating: NEMA 3R
- Temperature rating: -40°C to 105°C

### Ordering Information - Crimp Non-vulcanized Male Plugs:



E-Z1016-8031

Cable Size	Color	Complete Cat. #	Contact Only Cat. #	Insulator Only Cat. #
3 / 0 - 4 / 0	Black	E-Z1016-8030	A200038-6	E-Z200074-60
3 / 0 - 4 / 0	Red	E-Z1016-8032	A200038-6	E-Z200074-62
3 / 0 - 4 / 0	Green	E-Z1016-8034	A200038-6	E-Z200074-64
3 / 0 - 4 / 0	White	E-Z1016-8035	A200038-6	E-Z200074-65
3 / 0 - 4 / 0	Blue	E-Z1016-7708	A200038-6	E-Z200074-66
3 / 0 - 4 / 0	Brown	E-Z1016-7709	A200038-6	E-Z200074-67
3 / 0 - 4 / 0	Orange	E-Z1016-8033	A200038-6	E-Z200074-63
3 / 0 - 4 / 0	Yellow	E-Z1016-8031	A200038-6	E-Z200074-61

### Ordering Information - Crimp Non-vulcanized Female Plugs:

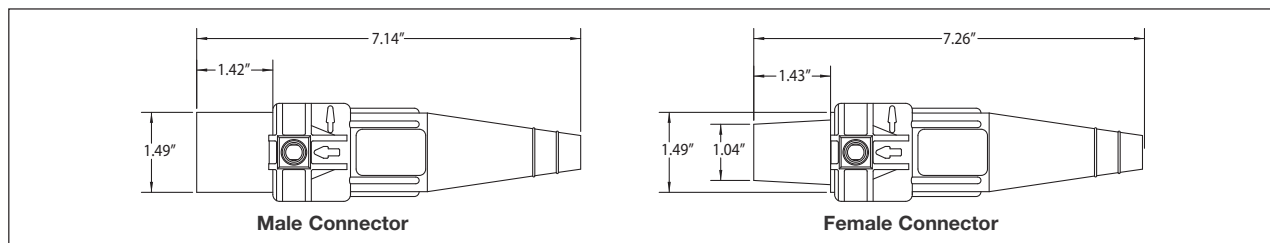


E-Z1016-7724

Cable Size	Color	Complete Cat. #	Contact Only Cat. #	Insulator Only Cat. #
3 / 0 - 4 / 0	Black	E-Z1016-8080	A200035-14	E-Z200075-60
3 / 0 - 4 / 0	Red	E-Z1016-8082	A200035-14	E-Z200075-62
3 / 0 - 4 / 0	Green	E-Z1016-8084	A200035-14	E-Z200075-64
3 / 0 - 4 / 0	White	E-Z1016-8085	A200035-14	E-Z200075-65
3 / 0 - 4 / 0	Blue	E-Z1016-7724	A200035-14	E-Z200075-66
3 / 0 - 4 / 0	Brown	E-Z1016-7725	A200035-14	E-Z200075-67
3 / 0 - 4 / 0	Orange	E-Z1016-8083	A200035-14	E-Z200075-63
3 / 0 - 4 / 0	Yellow	E-Z1016-8081	A200035-14	E-Z200075-61

To order single packaged products, add a "K" suffix to the complete catalog number.

### Dimensions:



Male Connector

Female Connector

**Crouse-Hinds**  
by **F.T.M.**