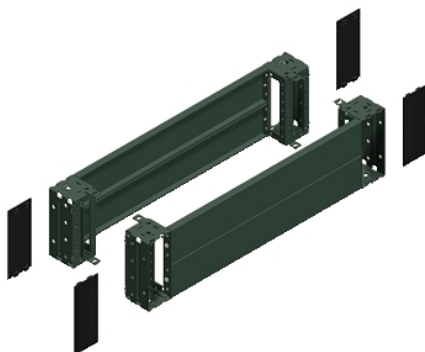


# NSYSPF8200

Front & rear plinth, PanelSeT SFN, Spacial SF, Spacial SM, for electrical enclosure W800mm, plinth H200mm



## Main

Range	Spacial
Accessory / separate part category	Enclosure accessory
Product or Component Type	Plinth front
Anwendung	Multi-purpose Electronic application Compartmentalised application
Nennmaße des Gehäuses	-
Device composition	Fixing elements 4 corner cover 4 corner 2 front panel 2 rear panel
Range compatibility	Spacial Spacial SF Spacial Spacial SM Spacial Spacial SD Spacial Spacial S3D Spacial Spacial CRN
Mounting support	Plinth side panels

## Complementary

Fixing mode	By fixing element - on structure
Color	Gray RAL 7022)
Surface Finish	Epoxy-polyester powder
Permanent permissible load	2866.01 lb(US) (1300 kg)
Height	7.87 in (200 mm)
Width	Nominal 31.50 in (800 mm)

## Environment

IP degree of protection	IP30 complete plinth)
IK degree of protection	IK10

## Ordering and shipping details

Category	80036-ENCLOSURE SYSTEMS ACCESSORIES
Discount Schedule	ES1
GTIN	00785901630067
Returnability	Yes
Country of origin	TN

## Packing Units

Unit Type of Package 1	PCE
Number of Units in Package 1	1
Package 1 Height	7.87 in (20.000 cm)
Package 1 Width	8.27 in (21.000 cm)
Package 1 Length	32.09 in (81.500 cm)
Package 1 Weight	19.84 lb(US) (9.000 kg)

Unit Type of Package 2	PAM
Number of Units in Package 2	28
Package 2 Height	62.99 in (160.000 cm)
Package 2 Width	39.37 in (100.000 cm)
Package 2 Length	47.24 in (120.000 cm)
Package 2 Weight	584.23 lb(US) (265.000 kg)

### Offer Sustainability

Sustainable offer status	Green Premium product
REACH Regulation	<a href="#"> REACH Declaration</a>
EU RoHS Directive	Pro-active compliance (Product out of EU RoHS legal scope)
Mercury free	Yes
China RoHS Regulation	<a href="#"> China RoHS Declaration</a>
RoHS exemption information	<a href="#"> Yes</a>
Environmental Disclosure	<a href="#"> Product Environmental Profile</a>
Circularity Profile	No need of specific recycling operations

### Contractual warranty

Warranty	18 months
----------	-----------