

BMP1001F3NA2A

synchronous motor - BMP - 480 VAC - 0.95 kW
- IP65 - IEC



Main

| | |
|---------------------------|--|
| Product or Component Type | Synchronous motor |
| Device short name | BMP |
| Maximum mechanical speed | 3600 rpm |
| Nominal output power | 750 W ATV32 0.75 kW 400 V three phase 750 W ATV32 1.1 kW 400 V three phase 750 W ATV320 0.75 kW 400 V three phase 750 W ATV320 1.1 kW 400 V three phase |
| Nominal torque | 21.15 Lbf.In (2.39 N.m) ATV32 0.75 kW 400 V three phase 21.15 Lbf.In (2.39 N.m) ATV32 1.1 kW 400 V three phase 21.15 Lbf.In (2.39 N.m) ATV320 0.75 kW 400 V three phase 21.15 lbf.in (2.39 N.m) ATV320 1.1 kW 400 V three phase |
| Nominal speed | 3000 rpm ATV32 0.75 kW 400 V three phase 3000 rpm ATV32 1.1 kW 400 V three phase 3000 rpm ATV320 0.75 kW 400 V three phase 3000 rpm ATV320 1.1 kW 400 V three phase |
| Product compatibility | Variable speed drive ATV32 0.75 kW 400 V three phase[RETURN]Variable speed drive ATV32 1.1 kW 400 V three phase[RETURN]Variable speed drive ATV320 0.75 kW 380...500 V three phase[RETURN]Variable speed drive ATV320 1.1 kW 380...500 V three phase |
| Shaft end | Keyed |
| IP Degree of Protection | IP65 standard IP67 with IP67 kit |
| Holding brake | Without |
| Mounting Support | International standard flange |
| Electrical Connection | Rotatable right-angled connector |

Complementary

| | |
|-----------------------------|--|
| Range Compatibility | Altivar 32 Altivar Machine ATV320 |
| [Us] rated supply voltage | 480 V |
| Phase | Three phase |
| Maximum current Irms | 3.5 A ATV32 0.75 kW 400 V three phase 4.5 A ATV32 1.1 kW 400 V three phase 3.5 A ATV320 0.75 kW 400 V three phase 4.5 A ATV320 1.1 kW 400 V three phase |
| Nominal operating frequency | 250 Hz ATV32 0.75 kW 400 V three phase 250 Hz ATV32 1.1 kW 400 V three phase 250 Hz ATV320 0.75 kW 400 V three phase 250 Hz ATV320 1.1 kW 400 V three phase |
| Minimum operating frequency | 25 Hz ATV32 0.75 kW 400 V three phase 25 Hz ATV32 1.1 kW 400 V three phase 25 Hz ATV320 0.75 kW 400 V three phase 25 Hz ATV320 1.1 kW 400 V three phase |
| Maximum operating frequency | 300 Hz ATV32 0.75 kW 400 V three phase 300 Hz ATV32 1.1 kW 400 V three phase 300 Hz ATV320 0.75 kW 400 V three phase 300 Hz ATV320 1.1 kW 400 V three phase |
| Shaft diameter | 0.75 in (19 mm) |
| Shaft length | 1.57 in (40 mm) |

| | |
|---------------------------------------|---|
| Key width | 0.24 in (6 mm) |
| Motor flange size | 3.94 in (100 mm) |
| Torque constant | 1.71 N.m/A 104 °F (40 °C) |
| Number of motor poles | 5 |
| Number of motor stacks | 1 |
| Rotor inertia | 3.19 kg.cm ² |
| Stator resistance | 4.54 Ohm 104 °F (40 °C) |
| Stator inductance | 15.3 mH for q-axis winding 104 °F (40 °C) 13.28 mH for d-axis winding 104 °F (40 °C) |
| Maximum radial force Fr | 900 N 1000 rpm 720 N 2000 rpm 630 N 3000 rpm 570 N 4000 rpm |
| Maximum axial force Fa | 0.2 x Fr |
| Type of cooling | Natural convection |
| Length | 5.06 in (128.6 mm) |
| Centring collar diameter | 3.74 in (95 mm) |
| Centring collar depth | 0.14 in (3.5 mm) |
| Number of mounting holes | 4 |
| Mounting holes diameter | 0.35 in (9 mm) |
| Circle diameter of the mounting holes | 4.53 in (115 mm) |
| Net Weight | 7.36 lb(US) (3.34 kg) |

Ordering and shipping details

| | |
|-------------------|------------------------|
| Category | 18282-LEXIUM 32 MOTORS |
| Discount Schedule | PC53 |
| GTIN | 3606480564420 |
| Returnability | No |
| Country of origin | DE |

Packing Units

| | |
|------------------------------|--------------------------|
| Unit Type of Package 1 | PCE |
| Number of Units in Package 1 | 1 |
| Package 1 Height | 8.66 in (22.0 cm) |
| Package 1 Width | 7.87 in (20.0 cm) |
| Package 1 Length | 17.32 in (44.0 cm) |
| Package 1 Weight | 9.90 lb(US) (4.492 kg) |
| Unit Type of Package 2 | P06 |
| Number of Units in Package 2 | 6 |
| Package 2 Height | 30.31 in (77.0 cm) |
| Package 2 Width | 31.50 in (80.0 cm) |
| Package 2 Length | 23.62 in (60.0 cm) |
| Package 2 Weight | 78.16 lb(US) (35.452 kg) |

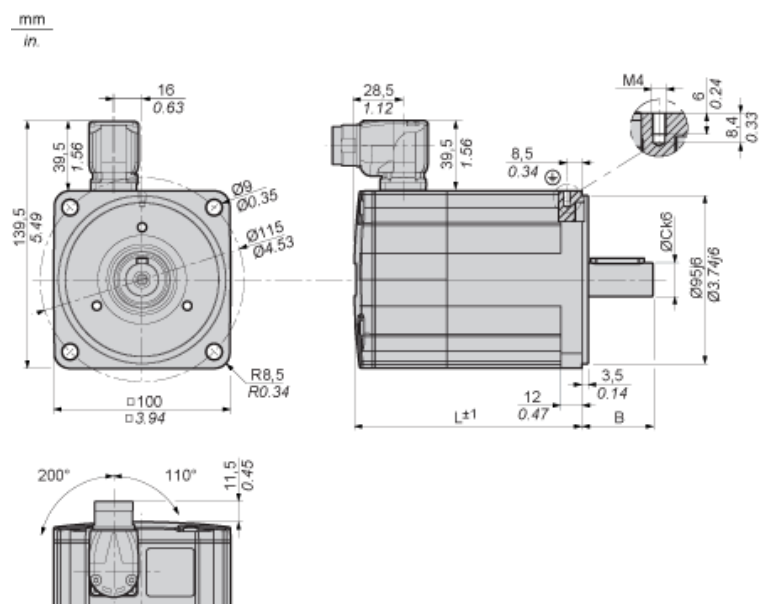
Offer Sustainability

| | |
|----------------------------|---|
| California proposition 65 | WARNING: This product can expose you to chemicals including: Lead and lead compounds, which is known to the State of California to cause cancer and birth defects or other reproductive harm. For more information go to www.P65Warnings.ca.gov |
| REACH Regulation |  REACH Declaration |
| EU RoHS Directive | Pro-active compliance (Product out of EU RoHS legal scope) |
| Mercury free | Yes |
| China RoHS Regulation |  China RoHS Declaration |
| RoHS exemption information |  Yes |
| WEEE | The product must be disposed on European Union markets following specific waste collection and never end up in rubbish bins. |
| PVC free | Yes |

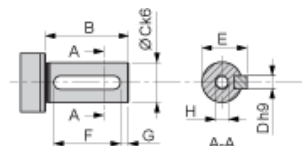
Contractual warranty

| | |
|----------|-----------|
| Warranty | 18 months |
|----------|-----------|

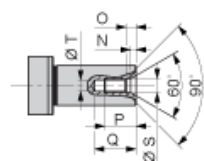
Dimensions



Parallel Key According to DIN 6885 A



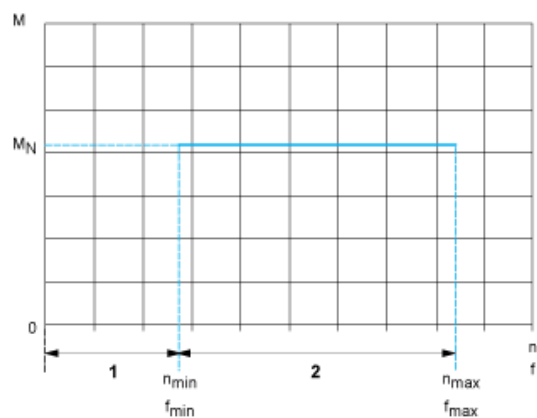
Female Thread of Shaft According to DIN 332-D



| | | |
|-----|------|-------|
| L | mm | 128.6 |
| in. | 5.06 | |
| B | mm | 40 |
| in. | 1.57 | |
| C | mm | 19 |
| in. | 0.75 | |
| D | mm | 6 |
| in. | 0.24 | |
| E | mm | 21.5 |
| in. | 0.85 | |
| F | mm | 30 |
| in. | 1.18 | |
| G | mm | 5 |
| in. | 0.20 | |

| | | |
|-----|------|-----|
| H | | M6 |
| N | mm | 2.8 |
| in. | 0.11 | |
| O | mm | 5 |
| in. | 0.20 | |
| P | mm | 16 |
| in. | 0.63 | |
| Q | mm | 21 |
| in. | 0.83 | |
| S | mm | 6.4 |
| in. | 0.25 | |
| T | mm | 5 |
| in. | 0.20 | |

Performance curves



M : Torque in Nm

n : Speed in rpm

f : frequency in Hz

1 : Only permissible during acceleration and deceleration phases.

2 : Continuous operation with the default values from the configuration file.