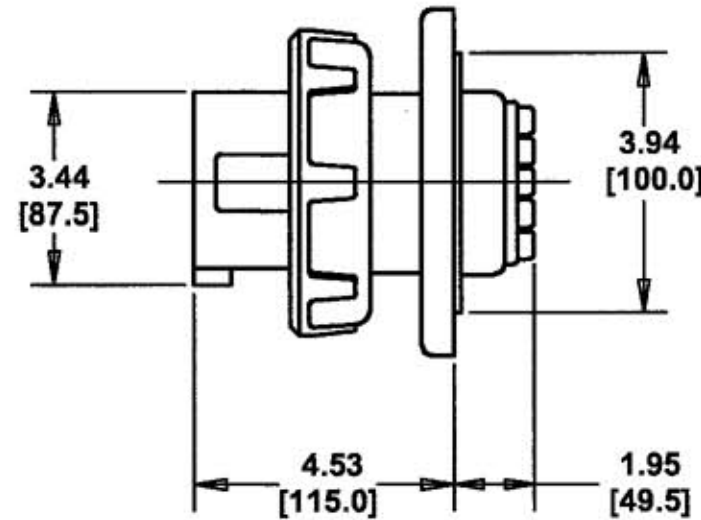
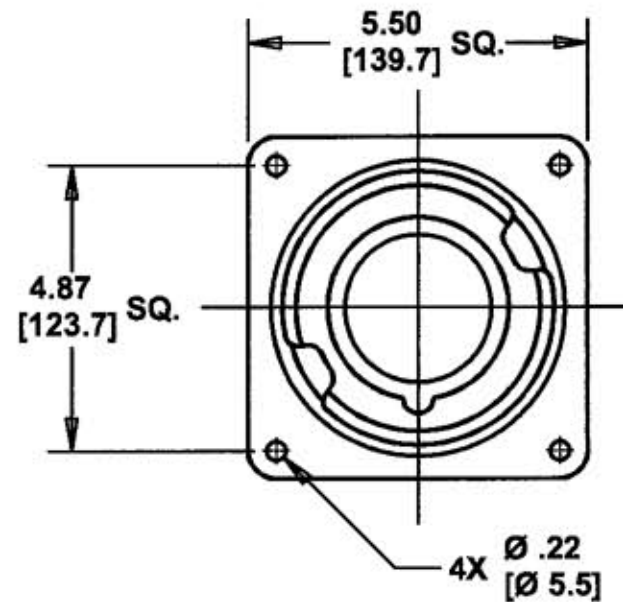


# M-6098 5



## LIST OF PARTS

DESCRIPTION	MATERIAL	FINISH
HOUSING	SEE TABLE	
GASKET	NEOPRENE	
LOCK RING	POLYESTER	
INTERIOR	THERMOSET	
PINS	BRASS	
TERMINAL SCREWS	ST. STEEL	
FLANGE	NYLON	
ASSEMBLY SCREWS	ST. STEEL	

DIMENSION SHEET FOR CAT. NO. SEE TABLE

REPAIRABLE ☐

NON-REPAIRABLE ☒

B

M-6098

5

CAT. NO.	CONFIGURATION	RATING	COMMENTS	HOUSING		CAT. NO.	CONFIGURATION	RATING	COMMENTS	HOUSING	
				MATERIAL	COLOR					MATERIAL	COLOR
						HBL5100B7W		100A 3ØY 277/480 VAC		NYLON	RED
						HBL5100B9W		100A 3ØY 120/208 VAC		NYLON	BLUE
HBL5100B5W		100A 3ØY 347/600 VAC		NYLON	BLACK						
HBL5125B6W		125A 220/380VAC 240/415 VAC		NYLON	RED						

### NOTES (UNLESS OTHERWISE SPECIFIED)

1) TOLERANCES ARE:

DECIMALS ± .03  
ANGLES ± 2°

2) DIMENSIONS ARE: INCHES

[MILLIMETERS]

5 REDRAWN ON CAD WITH CHANGES. ADDED NOTES 1 & 2, "HOUSING" AND "COMMENTS" COLUMNS TO TABLE. IN TABLE: ADDED "240/415VAC TO HBL5125B6W AND "A" WAS "AMP" IN LIST OF PARTS, "SEE TABLE" WAS "NYLON" AND "NEOPRENE" WAS "RUBBER". .22 DIM. WAS 7/32 AND 4.87[123.7] SQ. WAS 4.875/123.82 SQ. "Ø" WAS "DIA." AND "[XX.X]" WAS "MM". SUPERSEDES DWG. DATED 5/6/80 PER DCN #12944. JMN

DJP 6/28/06

SYM REVISIONS APP DATE

THE DESIGN AND DIMENSIONS OF THE PRODUCT SHOWN ON THIS DRAWING ARE SUBJECT TO CHANGE WITHOUT NOTICE

TITLE  
100A & 125A 4 POLE 5 WIRE  
PIN AND SLEEVE INLETS

TOLERANCES UNLESS OTHERWISE SPECIFIED  
FRACTIONS 1/64  
DECIMALS ± .005  
ANGLES ± 2°

WIRING DEVICE-KELLEMS  
HUBBELL INCORPORATED  
BRIDGEPORT, CT

DR. BY W.T.C. APP. BY DJP  
TR. BY JMN SCALE NONE  
CHK'D BY DJP DATE 6/28/06