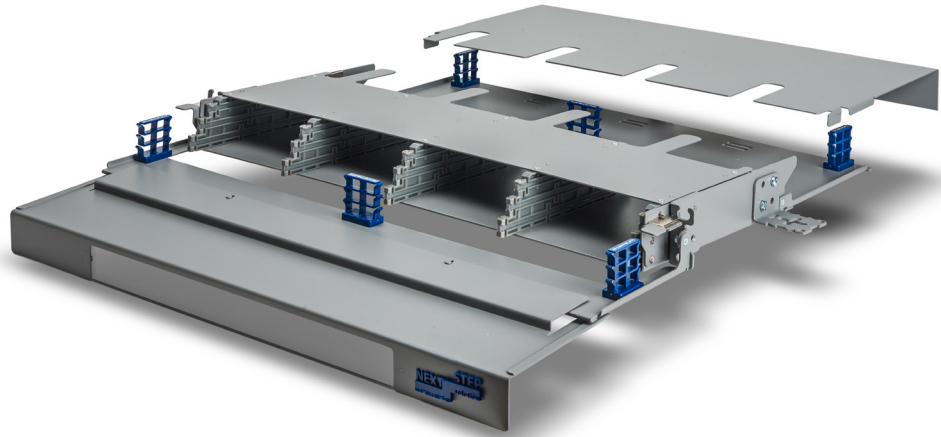




wirewerks

Next-Step 1U Patch Panel

Sales Trigger



Wirewerks Next Step solutions are high-density optical cabling solutions offering industry leading connector density and state of the art cable management, capable of handling all passive optical installs.

The Next Step™ 1U patch panel features a staggered shelf design with the capacity to house 12 Next Step modules. The staggered design allows for easy access to a cassette or tray without disrupting any other modules in the panel. The modules can slide into multiple positions facilitating moves, adds, and changes.

Description

Included with the Standard (NS-PP-W1U1) and Light (NS-PP-W1U2) versions of the Next Step 1U panel are 6 magnetic cable managers capable of managing 72 fibers each. They can be positioned anywhere on the panel greatly enhancing cable management in high density applications. The Lean (NS-PP-W1U1L) version of the panel is ideal for patching purposes and does not include cable management.

All versions of the Next Step™ 1U panel can accommodate 144F using LC cassettes, 1,152F using MPO adapter strips, and 288F when used as a splice box. The flexibility of this panel is like none other on the market today - No matter the application or installation type, the Next Step panel can be part of the solution.

Target Audience

Data Center (MPO-MPO/1,152F) - Network Managers, Data Center Managers,
MSO (LCU-LCU/144F) - Inside Plant Manager/Engineer, Head End Managers, Engineering Managers, Network Managers

Applications

- Entrance facility
- Data center
- Telecommunications room
- Equipment room
- Consolidation point
- Central office
- Cellular tower base station

Competitive Analysis - NS-PPW1U1 August 2016

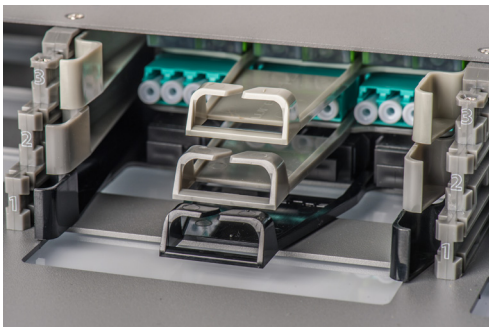
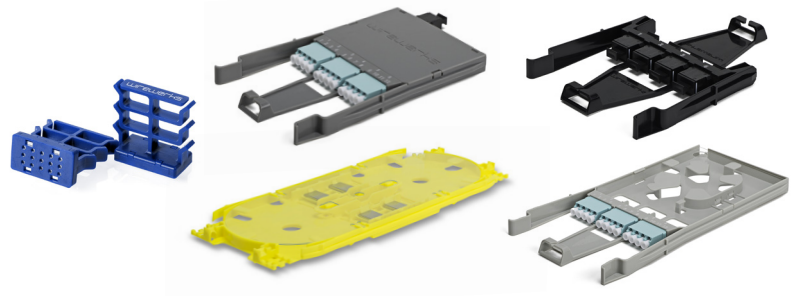
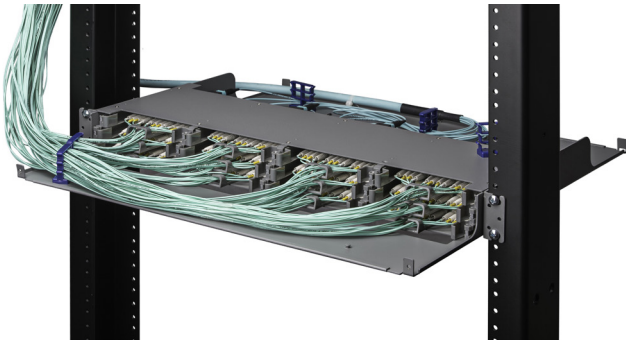
| Manufacturer | Wirewerks | AFL | Corning | Clearfield | TE / Commscope |
|---|---|---|---|--------------------------------------|--|
| Part Number | NS-PPW1U1 | XFM-HD 1U | EDGE-01U-SP | GPJ-048-F7B-AA4B-XXXM | NG4-CH100000 |
| Description | Next Step 1U Rack Mount Patch Panel 144/288 Fiber | XFM-HD Panel, 1RU, 12 Cassette/ 144 fiber Capacity, Black | Pretium EDGE Housing, 1 rack unit, hold up to 12 EDGE modules or panels | Fieldsmart FxDS Fiber Panel 1U Panel | NG4access Optical Distribution Frame *Only comes min. 4U* |
| Fiber Capacity in 1RU | | | | | |
| LC | 144 | 144 | 144 | 48 | 48 |
| MPO | 1,152 | | 1,152 | 288 | |
| Splice Box | 288 | | | | |
| CWDM | 12 Modules Up to 10CH each | | | 2 Modules Up to 10CH each | 14 Modules in a 3U Rack Space |
| Installation Types Supported | | | | | |
| Pre-Terminated MPO/MTP | • | • | • | • | • |
| Field Terminable Connectors | • | • | | • | |
| Pigtail Fusion Splicing | • | | | • | • |
| Ribbon Fusion Splicing | • | | | • | • |
| Splice Box | • | | | | • |
| C/D-WDM | • | | | • | • |
| Number of Modules per 1RU | 12 | 12 | 12 | 2 | 1 |
| Number of Connectors per Module | 12LC, 6SC, 4MPO | 12LC, 4MPO | 12LC, 4MPO | 24LC, 12MPO | 24LC, 12SC |
| Available Sizes | 1U, 4U | 1U, 2U, 4U | 1U, 2U, 4U | 4U | 1U, 2U, 4U |
| Front & Rear Module Insertion | • | • | • | • | |
| Tool-Less Access To Conectors | • | • | • | • | • |
| Weight | 2.61kg (5.75lbs) | 8.2 kg (18 lbs) | 6.4 kg (14 lbs) | N/A | N/A |
| Multi-Position Cable Manger Included | • | | | | |
| Module Configuration | Staggered | Stacked | Stacked | 2 Modules Side by side | Stacked |
| Sliding Mechanism | Individual | Entire Drawer | Entire Drawer | Individual | Entire Drawer |

The competitive analysis shows that all high density panels can accommodate up to 144 LC fiber in 1U except for Clearfield. The **Wirewerks Next Step panel is the only panel that can be used in all 6 application environments.**

Wirewerks is also the only panel to have a **staggered module configuration** with a sliding mechanism for **each module**. The advantage is easier finger access and a sliding mechanism that allows a single module to be worked on without disrupting any other modules.

The innovative design of the Multi-Position Cable Manager is another unique feature that facilitates organizing and managing cables.

Summary of Competitive Analysis



FAQ's

Q1. Will this fit in a 23" rack?

A. Yes. The Next Step Panel comes as a 19" rack mount. However, by turning the brackets on the side, this will fit a 23" rack.

Q2. Will the Magnetic Fiber Management have any impact on the Fiber performance?

A. No, this will have no impact on the optical functions.

Q3. Why are the Rack Mount Brackets open at the top and bottom?

A. This allows one person to easily install the panel. Simply select the position you want the panel on the rack. Install one rack screw (included) on each rack. Install the panel's brackets on the screws, starting with the bottom of the brackets. The panel will stay so you can install the top screws.

Q4. Can I use a combination of the different cassettes in one panel?

A. Yes! That's what is so great about Next Step. You can use any combination of our Cassettes in our Next Step Panel. You can splice with one cassette, use an MPO to LC cassette in another position. You can even use our Splice Trays in the Panel along with any other Cassette.

Q5. I dropped the Magnetic Fiber Management under my floor. Can I order replacements?

A. Yes

Q6. Can I order the Cassettes or the Patch Module separately as needed?

A. Yes. As the need arises, you can order any of the Cassettes separately.

Q7. Can I order the Patch Module fully loaded with a 30m pigtail?

A. Yes! Customization is our specialty.

Q8. Field Terminable Adapters – Can I use those in the Patch Modules?

A. Yes! Wirewerks sells a full selection of Field Adapters along with an entire Kit (cleaver included). Ask us about it!!

Q9 Will your MPO Adapter Strip take both 12 and 24 count MPO cables?

A. Yes. Using our MPO to MPO Adapter Strip, we can make both 12 and 24 count MPO's. You can install up to 1152 fibers in a 1U Panel. We even make the MPO Fibers as well.

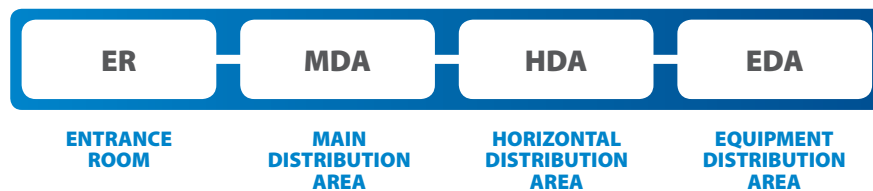
Q10 I'm currently using the NG platform from TE/Commscope. Can I incorporate the Next Step platform with this?

A. Absolutely! The Next Step platform is an excellent addition to the NG platform. The Next Step gives you a "hand off" from the NG to the System. In fact wherever a hand-off is needed, regardless of the platform, using the Next Step will result in significant space savings (minimum of 3U savings in the case of NG4 platform).

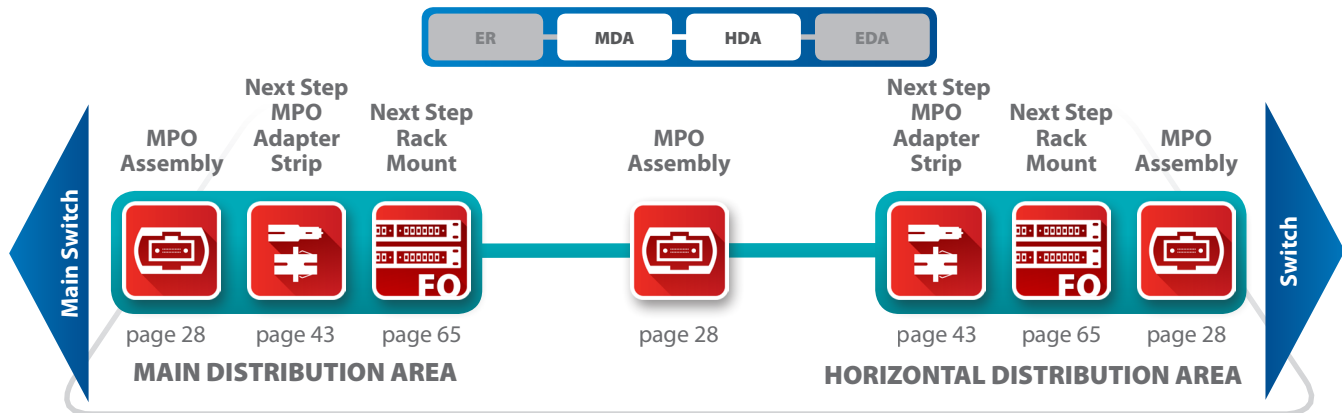
Related Products

Storage Area Network – The Data Center

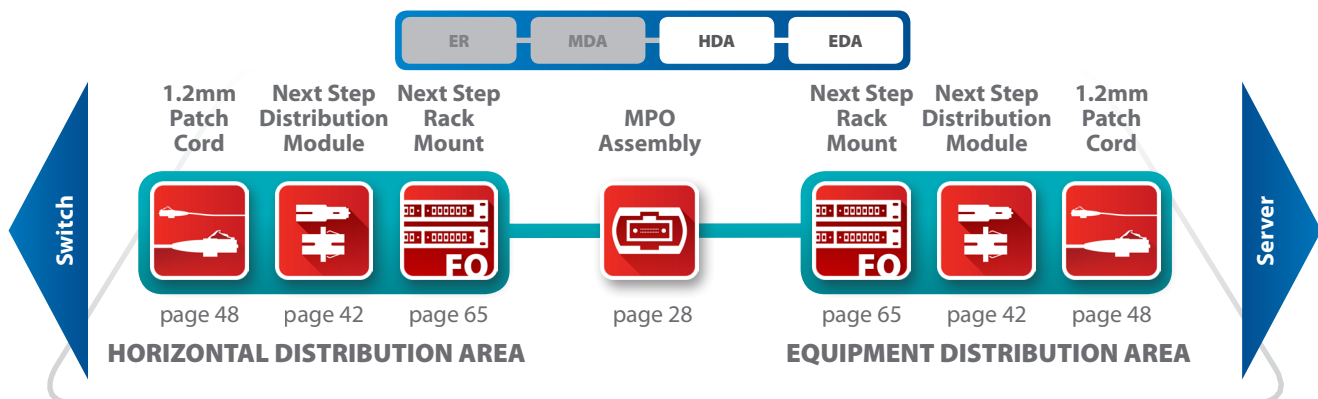
SAN Elements



BACKBONE MPO DROP | MPO-MPO Pre-terminated



HDA to EDA | MPO Distribution Module

**Note:** Page numbers refer to Wirewerks Solutions Guide