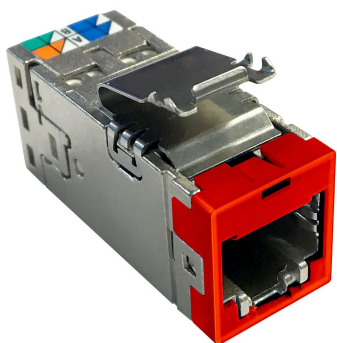


# 760238143 | USL600-SHLD, RED



Uniprise SLX Series Modular Jack, category 6, shielded , 4 Pair, without dust cover, red

- Fits all existing SL panels and faceplates
- Universal latch for SL series
- 9 Different color options – Replaceable color caps
- Terminated with SL Series termination tool
- Wire holder cut off during termination
- Universal wiring label
- Easy re-termination

## Product Classification

<b>Regional Availability</b>	North America
<b>Portfolio</b>	Uniprise®
<b>Product Type</b>	Modular jack
<b>Product Series</b>	SLX Series

## General Specifications

<b>ANSI/TIA Category</b>	6
<b>Cable Type</b>	Shielded
<b>Color</b>	Red
<b>Conductor Type</b>	Solid   Stranded
<b>Integrated Dust Cover Type</b>	None
<b>Mounting</b>	SL Series faceplates and panels
<b>Outlet Type</b>	Standard
<b>Termination Tool</b>	SL Termination tool
<b>Termination Type</b>	IDC
<b>Transmission Standards</b>	ANSI/TIA-568-C.2   ISO/IEC 11801 Class E
<b>Wiring</b>	T568A   T568B

## Dimensions

<b>Panel Cutout, recommended</b>	14.78 x 20.07 mm (0.58 x 0.79 in)
<b>Panel Thickness, recommended</b>	1.6 mm   0.063 in
<b>Height</b>	16.13 mm   0.635 in
<b>Width</b>	14.48 mm   0.57 in

# 760238143 | USL600-SHLD, RED

Depth	36.8 mm   1.449 in
Compatible Cable Diameter, maximum	8.5 mm   0.335 in
Compatible Insulated Conductor Diameter, maximum	1.6 mm   0.063 in
Contact Plating Thickness	1.27 µm
Compatible Conductor Gauge, solid	26–22 AWG
Compatible Conductor Gauge, stranded	26–24 AWG

## Electrical Specifications

Remote Powering	Fully supports the safe delivery of power over LAN cabling described by IEEE 802.3bt (Type 4) and complies with the unmating under electrical load requirements prescribed by IEC 60512-99-002
-----------------	--

## Material Specifications

Contact Base Material	Beryllium copper
Contact Plating Material	Gold
Material Type	Polycarbonate   Zamak

## Environmental Specifications

Operating Temperature	-10 °C to +60 °C (+14 °F to +140 °F)
Flammability Rating	UL 94 V-0

## Packaging and Weights

Packaging quantity	24
Packaging Type	Bag   Box

## Regulatory Compliance/Certifications

Agency	Classification
CHINA-ROHS	Below maximum concentration value
REACH-SVHC	Compliant as per SVHC revision on <a href="http://www.commscope.com/ProductCompliance">www.commscope.com/ProductCompliance</a>
ROHS	Compliant

