

LEDVANCE LUMINAIRES

DUAL SELECTABLE

WALL PACK – CUT OFF

LEDVANCE LUMINAIRE SPECIFICATION DATA

Catalog #	Comments
Project	
Type	
Prepared by	

PERFORMANCE CLASS™



APPLICATION

The Performance Class Dual Selectable Cut Off Wall Pack boasts both wattage and CCT selectability to cover all your needs. It keeps the same form factor as the old technology for an easy LED upgrade without all the patchwork. With 12 different lumen packages in only 4 SKUs, this full cut off Wall Pack has all your projects covered. It also comes with an integrated photocell and offers plug and play field installable sensors.

BENEFITS & FEATURES

- Up to 150 LPW
- Selectable color temperature: 3000K/4000K/5000K and the exclusive warm spectrum 1800K/2200K/2700K
- CRI>80
- Selectable wattage and lumens:
 - 20/30/35W | 3,000/4,500/5,250 lm
 - 40/50/60W | 6,000/7,500/9,000 lm
 - 65/80/100W | 9,750/12,000/15,000 lm
 - 120/130/150W | 18,000/19,500/22,500 lm
- Type III full cut off distribution
- DLC 5.1 Premium Listing assures high energy efficiency and qualifies this product for utility rebates
- Ready for field installable standalone sensors, no wiring required
- Integrated photocell
- UV stabilized polycarbonate lenses, vandal resistant
- Emergency Battery Backup options

CONTROLS
READY



LEDLUM197R4 4-25

ELECTRICAL

- 120-347 VAC
- Power Factor > 0.9
- THD < 20%
- Dimmable 0-10V
- Surge protection 4 kV

RATED LIFE

- 100,000 hours (L_{70})
@ 25°C ambient

CERTIFICATIONS & LISTINGS

- cULus listed to UL1598 standards
- RoHs
- FCC
- IP65, wet location rated
- DLC 5.1 Premium
- Dark Sky compliant
(when used at <3000K)

OPERATING TEMPERATURE

- -40°F to +122°F (-40°C to +50°C)
- EMBB: +41°F to +122°F (+5°C to +50°C)

WARRANTY

- 5 year
- NLB Trusted Warranty Program

INSTALLATION

- Wall mount



INSTALLATION
GUIDE

ORDERING GUIDE

WALPAKC	9A	SXXX	XXX	D	8	SCXX	BZ	X
PRODUCT NAME	GENERATION	WATTAGE	VOLTAGE	DIMMING	CRI	COLOR TEMPERATURE	COLOR/FINISH	OPTIONS
WALPAKC = Wall Pack Cutoff	9A = Generation 9A	S035 = 20/30/35W S060 = 40/50/60W S100 = 65/80/100W S150 = 120/130/150W	UNH = 120-347V HUV = 277-480V	D = 0-10V Dimming	80 = >80 CRI	SC15 = 1800/2200/2700K SC2 = 3000/4000/5000K	BZ = Bronze	P = Photocell E = Emergency

ORDERING INFORMATION

ITEM #	ORDERING ABBREVIATION	WATTAGE (W)	INPUT VOLTAGE (V)	DIM. (V)	CRI	COLOR TEMP (CCT)	TOTAL FIXTURE LUMENS (LM)	DLC	LPW	OPTIONS	BUG RATING
66180	WALPAKC9AS035UNHD8SC15BZP	20/30/35	120-347	0-10	>80	1800/2200/2700K	2600/3900/4550	—	Up to 130	Photocell	B2U0G1
65856	WALPAKC9AS035UNHD8SC2BZP	20/30/35	120-347	0-10	>80	3000/4000/5000K	3000/4500/5250	5.1 Prem	Up to 150	Photocell	B2U0G1
65860	WALPAKC9AS035UNHD8SC2BZPE	20/30/35	120-347	0-10	>80	3000/4000/5000K	3000/4500/5250	5.1 Prem	Up to 150	Photocell/ Emergency	B2U0G1
66181	WALPAKC9AS060UNHD8SC15BZP	40/50/60	120-347	0-10	>80	1800/2200/2700K	5200/6500/7800	—	Up to 130	Photocell	B2U0G1
65857	WALPAKC9AS060UNHD8SC2BZP	40/50/60	120-347	0-10	>80	3000/4000/5000K	6000/7500/9000	5.1 Prem	Up to 150	Photocell	B2U0G1
65861	WALPAKC9AS060UNHD8SC2BZPE	40/50/60	120-347	0-10	>80	3000/4000/5000K	6000/7500/9000	5.1 Prem	Up to 150	Photocell/ Emergency	B2U0G1
66182	WALPAKC9AS100UNHD8SC15BZP	65/80/100	120-347	0-10	>80	1800/2200/2700K	8450/10,400/13,000	—	Up to 130	Photocell	B3U0G2
65858	WALPAKC9AS100UNHD8SC2BZP	65/80/100	120-347	0-10	>80	3000/4000/5000K	9750/12,000/15,000	5.1 Prem	Up to 150	Photocell	B3U0G2
65868	WALPAKC9AS100HUV8SC2BZP	65/80/100	277-480	0-10	>80	3000/4000/5000K	9750/12,000/15,000	5.1 Prem	Up to 150	Photocell	B3U0G2
66183	WALPAKC9AS150UNHD8SC15BZP	120/130/150	120-347	0-10	>80	1800/2200/2700K	15,600/16,900/19,500	—	Up to 130	Photocell	B4U0G2
65859	WALPAKC9AS150UNHD8SC2BZP	120/130/150	120-347	0-10	>80	3000/4000/5000K	18,000/19,500/22,500	5.1 Prem	Up to 150	Photocell	B4U0G2
65869	WALPAKC9AS150HUV8SC2BZP	120/130/150	277-480	0-10	>80	3000/4000/5000K	18,000/19,500/22,500	5.1 Prem	Up to 150	Photocell	B4U0G2

PHYSICAL INFORMATION

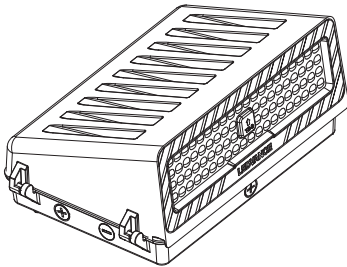
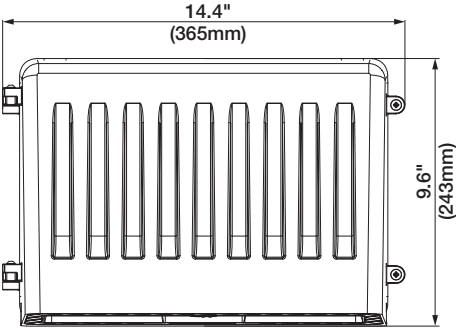
LUMINAIRE DESCRIPTION	LENGTH IN (MM)	WIDTH IN (MM)	HEIGHT IN (MM)	WEIGHT LB (KG)
35W and 60W	14.4 (365)	6.9 (175)	9.6 (243)	6.2 (2.8)
100W and 150W	14.4 (365)	9.5 (240)	9.6 (243)	7.9 (3.6)

WATTAGE COMPARISON

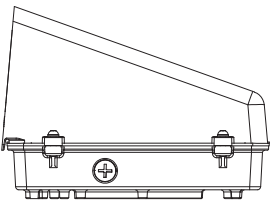
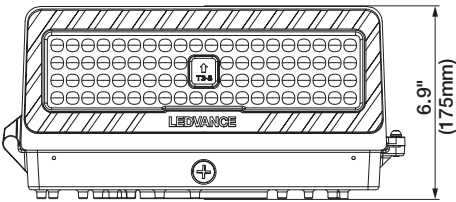
LED SOURCE WATTAGE/LUMENS	REPLACES TRADITIONAL SOURCE	ENERGY SAVINGS
35W/5,250lm	MH/HPS 100W	65%
60W/9,000lm	MH/HPS 250W	76%
100W/15,000lm	MH/HPS 400W	75%

35W/60W

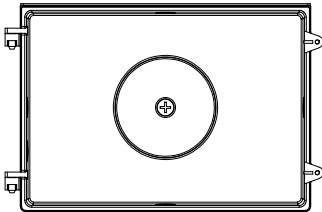
Top View



Front View



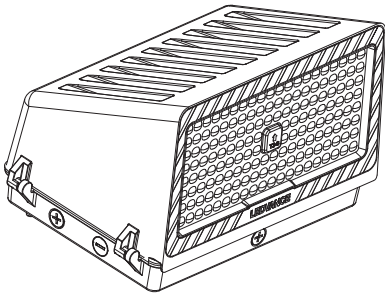
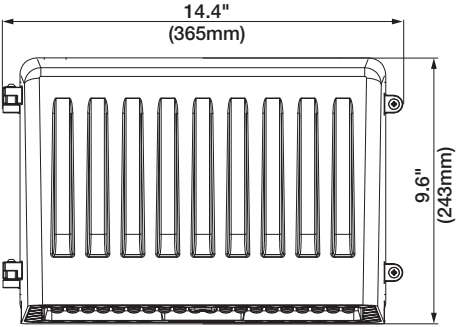
Side View



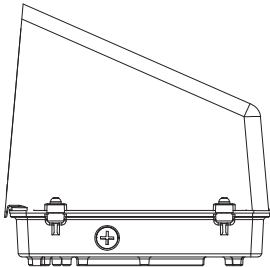
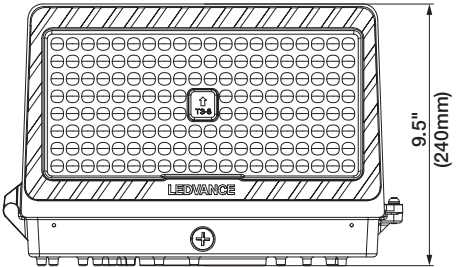
Back View

100W/150W

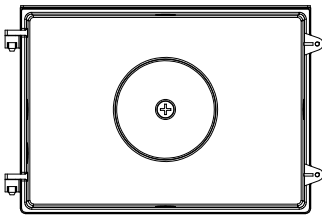
Top View



Front View



Side View



Back View

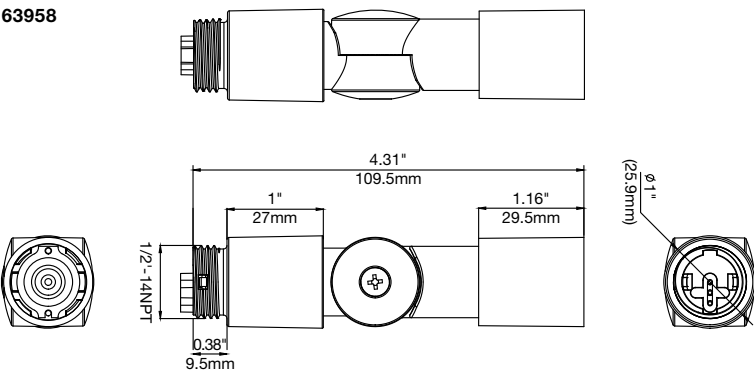
ACCESSORIES


ITEM #	ORDERING ABBREVIATION	ITEM DESCRIPTION
Sensors		
63958	WALPAKN9ASENSORADAPTOR	Daylight/Motion Sensor Adaptor – Adaptor is required to install the sensor
62664	HIGHBAYPIRMOTIONDAYSENSOR2	Field installable PIR Motion/Daylight Sensor, IP65, Max. mounting height 39ft, White
65622*	HIGHBAYMOTIONDAYSENSOR	Field installable Microwave Motion/Daylight Sensor, IP65, Max. mounting height 49ft, White
65623	REMOTE/MOTIONDAY/001	Remote control for Motion/Daylight Sensors – Remote is required to change default settings

*Microwave sensors are not recommended for outdoor use. Microwave sensors are highly sensitive. Metal, glass, windows, industrial fans, and large obstructions can all generate false triggering. Based on installation, PIR sensor may be a better option, although extreme heat or cold can reduce sensitivity or cause false triggers. For additional application notes, please go to: <https://assets3.ledvanceus.com/media/resource/original/asset-13239171>

SENSOR ADAPTER

63958





The adapter is always required for proper installation. No wiring is necessary. To ensure compatibility, the top cap included with the adapter must be removed to expose the 3-pin base.

BATTERY INFORMATION

TYPE	STANDBY POWER	CHARGING TIME	CHARGING POWER	POWER IN EMERGENCY MODE	DISCHARGE TIME
LiFePO4	1.5W max	24h min	4W max	8W	90 min

OPTIONAL MOTION/DAYLIGHT SENSOR DEFAULT SETTINGS

Detection area	100%
Hold time – Time fixtures stays at 100% after last motion before dimming	10 minutes
Daylight threshold – Light level above which lights will remain off	50 Lux
Stand-by period – Time light remains dimmed before shutting off	60 minutes
Stand-by dimming – Dimming level of light during the stand-by period	30%



MOTION SENSOR
(62664)



REMOTE
(65623)

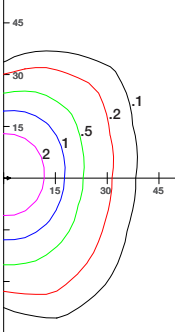


SPEC SHEET

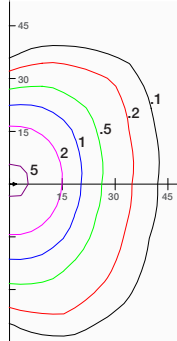
PHOTOMETRIC INFORMATION

HORIZONTAL ISO FOOT-CANDLE PLOT

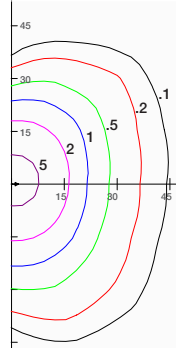
20W Fixture, Mounted at 15' mounting height



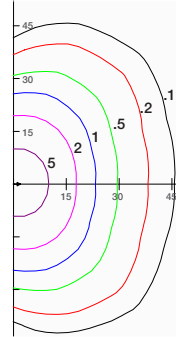
30W Fixture, Mounted at 15' mounting height



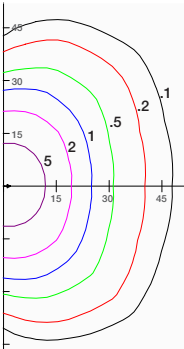
35W Fixture, Mounted at 15' mounting height



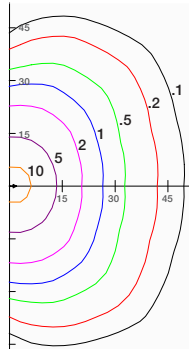
40W Fixture, Mounted at 15' mounting height



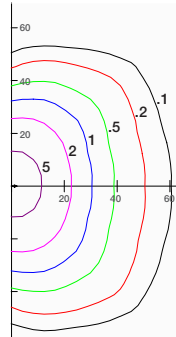
50W Fixture, Mounted at 15' mounting height



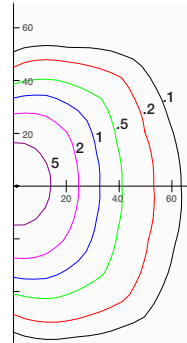
60W Fixture, Mounted at 15' mounting height



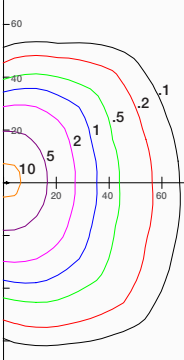
65W Fixture, Mounted at 20' mounting height



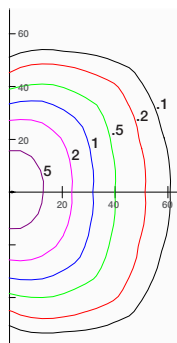
80W Fixture, Mounted at 20' mounting height



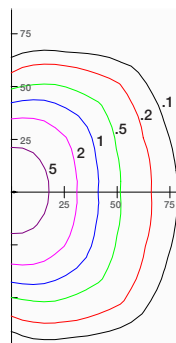
100W Fixture, Mounted at 20' mounting height



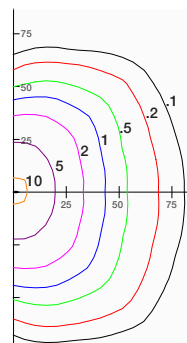
120W Fixture, Mounted at 25' mounting height



130W Fixture, Mounted at 25' mounting height



150W Fixture, Mounted at 25' mounting height



MOUNTING HEIGHT (FT)	10	12	15	18	20	22
MULTIPLIER	2.25	1.56	1	0.69	0.56	0.46
MOUNTING HEIGHT (FT)	12	15	18	20	22	25
MULTIPLIER	2.78	1.78	1.23	1	0.83	0.64
MOUNTING HEIGHT (FT)	15	20	22	25	30	35
MULTIPLIER	2.78	1.56	1.29	1	0.69	0.51

- Multiply the footcandle levels in the diagram according to the desired installation height
- Each tick on the diagram represents a multiple of the mounting height from the fixture



LEDVANCE LLC
181 Ballardvale Street, Suite 203
Wilmington, MA 01887 USA
Phone 1-800-LIGHTBULB (1-800-544-4828)
www.ledvanceUS.com

LEDVANCE is a registered trademark.
All other trademarks are those of their respective owners.
Specifications subject to change without notice.



SCAN TO FOLLOW US
ON SOCIAL MEDIA