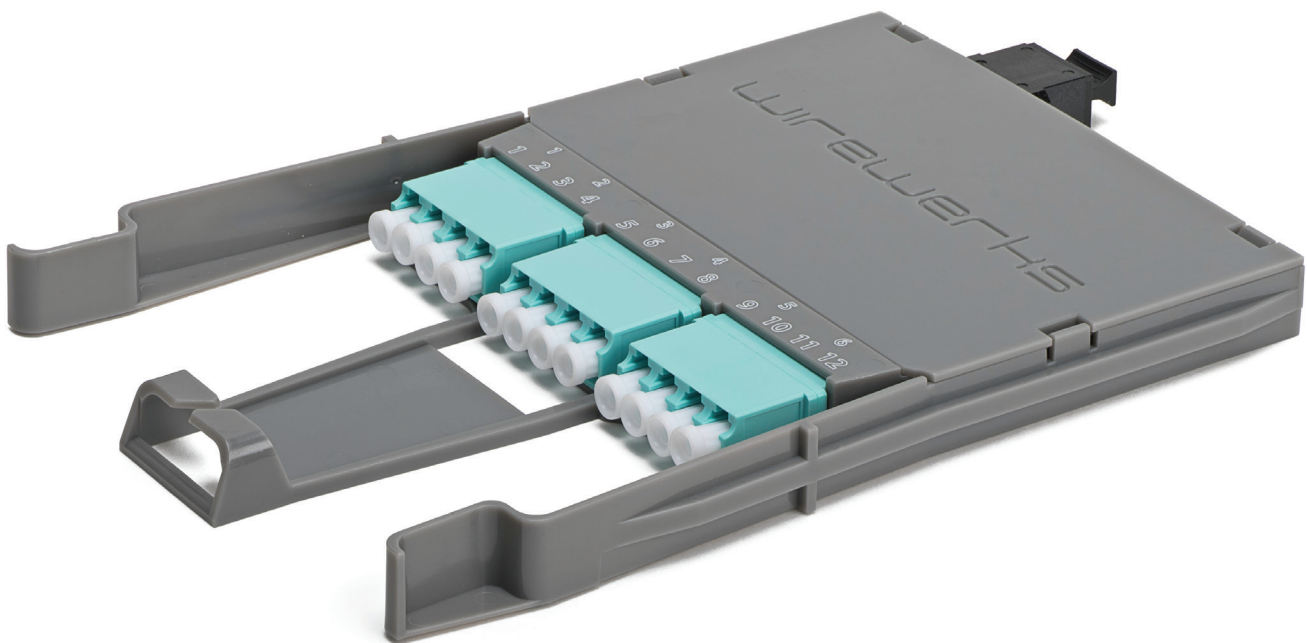


## **NEXTSTEP™**

### DISTRIBUTION MODULE

---

PDS-0191





## DESCRIPTION

**NextSTEP™ Distribution Modules** are high-density factory-terminated sealed cassettes, ideal for use in 'plug-and-play' optical networks. Each Distribution Module provides 12 LC connectors at the front of the module connected to 1 male or female MPO/MTP® connector at the rear of the module via a high quality MPO to single fiber fan-out within the cassette. Distribution Modules are factory terminated, tested and sealed, available in all standard fiber types and core sizes, and come standard with low-loss performance.

NextSTEP Distribution Modules are compatible with all Wirewerks NextSTEP rack and wall mount patch panels.

NextSTEP 1U/4U Patch Panels accommodate up to 12/48 Distribution Modules respectively, for up to 144F/576F in 1U/4U configurations. Distribution Modules include on-board cable management features that integrate with the advanced cable management features engineered into NextSTEP Patch Panels - allowing for faster, easier installations and maintenance in high-density applications.

Precision engineered and manufactured from durable, high-impact ABS thermoplastic, NextSTEP Distribution Modules slide easily into in any shelf position in any NextSTEP Patch Panel, from the front or the rear, and click securely into place without any special installation tools.

FEATURES  
and BENEFITS

- Precision engineered and manufactured from high-impact ABS thermoplastic for strength and durability
- Compatible with all NextSTEP Patch Panels
- Easy, tool-less slide-in/slide-out installation/removal from either the front or rear of the patch panel with secure click-in-place stops
- Low Insertion Loss (IL) standard on all Distribution Modules to minimize impact on loss budgets
- 12 LC distribution ports - 1 male/female MPO/MTP® port via a high quality MPO to single fiber fan-out within the sealed cassette
- 12F per module; up to 144F in 1U; up to 576F in 4U
- Integrated fiber management and strain-relief in each module
- Factory assembled and tested for guaranteed performance and reliability in the field

## APPLICATIONS

Vertical Markets	Installation Environments
Data Centers	Entrance Facility
SANs	Telecom Room
Enterprise LANs	Equipment Room
MSO/Carrier Networks	Consolidation Point
	Plug & Play Networks



## ORDERING INFORMATION

Part Number	Description
NS-DM-[ABCCDEE*]	NextSTEP™ Distribution Module [*See P/N Matrix to complete variable portion]

## PACKAGING and SHIPPING

Description	NextSTEP™ Distribution Module
Packaging	1 unit per blister pack
Shipping Weight	0.30lb
Dimensions	7.25" x 11.25" x 1" (184mm x 286mm x 25.4mm)

## PHYSICAL SPECIFICATIONS

Attribute	NextSTEP™ Distribution Module
Dimensions	7.25" x 11.25" x 1" (184mm x 286mm x 25.4mm)
Weight	0.15 lb
Plastic Materials	UL 94V-0 high-impact ABS thermoplastic
LC Ferrule Material	Zirconia Ceramic
MPO Ferrule Material	Composite

## PERFORMANCE SPECIFICATIONS

NextSTEP™ Distribution Module						
Parameter	SM		MM			
	UPC	APC	OM1 62.5/125	OM2 50/125	OM3 50/125	OM4 50/125
Insertion Loss* (IL)	≤ 0.65 dB		≤ 0.65 dB			
Return Loss (RL)	< -55 dB	< -65 dB	N/A			

\*Includes MPO and single fiber connector on each fiber

Optical mapping: MPO fiber 1 to LC connector 1 ... MPO fiber 12 to LC connector 12



MECHANICAL  
SPECIFICATIONS

Parameter	Value
Operating Temperature	-40° to 75°C (-40° to 167°F)
Storage Temperature	-40° to 85°C (-40° to 185°F)

STANDARDS  
COMPLIANCE**ANSI/TIA-942--A**

Telecommunications Infrastructure Standard  
for Data Centers

**ITU-T G652D**

Characteristics of Single Mode Optical Fiber  
Cable– Low Water Peak Single Mode Optical Fiber

**GR-326-CORE**

Fiber Optic Connector Intermateability Standard

**GR-20-CORE**

Generic Requirements for Optical Fiber  
and Optical Fiber Cable

**ANSI/TIA-568-C.3**

Optical Fiber Cabling Components Standard

**TIA-604 Series**

Fiber Optic Connector Intermateability Standard

**TIA-455 Series**

Standard test Procedure for Fiber Optic  
Components

**IEC 60874-1**

Connectors for Optical Fibers and Cables  
– Generic Standard

**UL 94**

Tests for Flammability of Plastic Material  
for Parts in Devices and Appliances

**RoHS**

Directive on Restriction of Hazardous Substances

PART NUMBER  
MATRIX

NS-DM-		A		B		CC		D		EE	
Core Size		MPO Connector		Front Connector		Polish		Number of Fibers			
1	Single Mode OS2, 9/125um	F	Female	LC	LC	A	APC	12	12 Fibers		
2	Multimode OM1, 62.5/125µm	M	Male			B	UPC				
3	Multimode OM2, 50/125µm					C	PC				
4	Multimode OM3, 50/125µm										
5	Multimode OM4, 50/125µm										