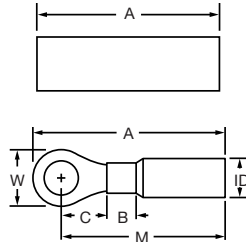


PRE-INSULATED HEAT SHRINKABLE TERMINALS AND SPLICES

Terminals
are NOT
Actual Size



These heat shrinkable products provide a tough, environmentally sealed wire termination. These terminals and splices insulate and protect the electrical connections from wire pull-outs, abrasions and mechanical abuse. They also resist water, salt and other contaminants.



BUTTED SEAM

RING TERMINALS

Rated at 600V, 105°C

Part #	Wire Size	Stud Size	Colour Insul.	Approx. Dimen. in Inches			
				A	W	C	M
761648	16-14	8	Blue	1.150	.310	.144	.932
761649	16-14	10	Blue	1.275	.394	.225	1.035
761650	16-14	1/4	Blue	1.306	.474	.284	1.080
761651	16-14	3/8	Blue	1.548	.706	.414	1.207
761652	12-10	10	Yellow	1.417	.394	.225	1.035
761653	12-10	1/4	Yellow	1.467	.474	.284	1.080
761654	12-10	3/8	Yellow	1.829	.706	.414	1.207

For use with Copper Solid and Stranded Wire Only



**FEMALE DISCONNECTS
(FOR .250 X .032 TABS)**

BUTTED SEAM

LISTED

Rated at 600V, 105°C

Part #	Wire Size	Stud Size	Colour Insul.	Approx. Dimen. in Inches	
				A	W
761655	16-14		Blue	1.140	.253

For use with Copper Stranded Wire Only



MALE DISCONNECTS

BUTTED SEAM

LISTED

Rated at 600V, 105°C

761656	16-14		Blue	1.227	.250
--------	-------	--	------	-------	------

For use with Copper Stranded Wire Only



BUTT CONNECTORS

SEAMLESS

Rated at 600V, 105°C

Part #	Copper Cond. Range	Stock Size (in)	Colour Code (ins)	Max. Insul. Diam.	A	ID
761244	22-18	.030	Red	.120	1.01	.055
761245	16-14	.030	Blue	.155	1.02	.090
761246	12-10	.040	Yellow	.215	1.01	.142

For use with Copper Solid and Stranded Wire Only

*Consult factory for other possible sizes and styles.

Add Suffix "B" for 500 pcs bulk pack
Standard Pack – 25 pcs/pack

Installing Tools: RAT-HS, Heat Shrink Gun (see page E-7), or Butane Mini Torch (see page E-7)

