

# FTP Inline Couplers

## Description

Keywerks™ CAT6A, CAT6 and CAT5e FTP Inline Couplers allow for direct 'feed-through' coupling of cables and cords terminated with RJ45 jacks. These FTP Inline Couplers facilitate the deployment of 'pre-terminated' cabling solutions in a wide variety of environments including Data Centers, Healthcare facilities, commercial buildings and trade-show (temporary) installations where alien crosstalk, EMI and RFI impairments are a concern. Precision engineered and manufactured, Keywerks FTP Inline Couplers utilize nickel-plated zinc-alloy housings to protect against interference and noise coupling, and are fully compatible with all Keywerks FTP products as well as any other industry-standard FTP Keystone-format faceplates, patch panels and surface mount boxes.

Keywerks Inline Couplers are extremely well-balanced, offering outstanding transmission performance in both short and long channel configurations and superior protection against alien crosstalk as well as EMI and RFI impairments.

## Features and Benefits

RJ45-to-RJ45 inline coupling allows use of pre-terminated cables for fast, easy cabling installation and repair

Compatibility with Keywerks™ products and other industry-standard Keystone format products provides flexibility in new and retro-fit installations

'Plug and Play' for RJ45 connectors reduces installation time and labor costs, with reduced field testing and troubleshooting

Zinc-alloy housing shields against Alien Crosstalk as well as EMI and RFI impairments

Well-balanced design provides excellent transmission performance in short and long channels required in Data Center environments

Reusable Inline Coupler reduces waste and supports 'Green Building' objectives

## Applications

Keywerks CAT6A FTP Inline Coupler: meets TIA-568-C.2 Category 6A and supports IEEE 10/100/1000/10GBASE-T Ethernet

Keywerks CAT6 FTP Inline Coupler: meets TIA-568-C.2 Category 6 and supports IEEE 10/100/1000BASE-T Ethernet

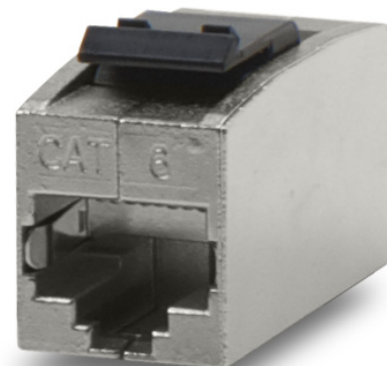
Keywerks CAT5E FTP Inline Coupler: meets TIA-568-C.2 Category 5e and supports IEEE 10/100/1000BASE-T Ethernet

Power over the Ethernet (PoE, PoE+)

Broadband and baseband analog Video

Video Conferencing/imaging

Digital Video



**Certification  
and Compliance**

ANSI/TIA-568-C.2	Balanced Twisted-Pair Telecommunication Cabling and Components Standards
ISO/IEC 11801	Generic Cabling for Customer Premises
ANSI/TIA-968-A	Technical Requirements for Connection of Terminal Equipment to the telephone Network
IEC 60603-7	Connectors for Electronic Equipment
FCC 47 part 68	Connection of the Terminal Equipment to the Telephone Network
UL 94	Tests for Flammability of Plastic Material for Parts in Devices and Appliances
RoHS	Directive on Restriction of Hazardous Substances

Part Number	Description	Packaging
KW-CSA-CFF	CAT6A RJ45 FTP Keywerks inline coupler, T568A/B	Clear Poly bag 1 unit per bag
KW-CS6-CFF	CAT6 RJ45 FTP Keywerks inline coupler, T568A/B	
KW-CS5-CFF	CAT5e RJ45 FTP Keywerks inline coupler, T568A/B	

**Physical  
Characteristics**

Parameter	Value
Housing Material	Zinc alloy with Nickel plated finish, fully shielded
Contact Material	Phosphor Bronze Alloy
Contact Plating Material	50µin Gold over 100µin Nickel
Overall Dimensions	30.5 mm (1.2 in) x 16.3 mm (0.6 in) x 14.6 mm (0.5 in)

**Mechanical  
Characteristics**

Parameter	Value
Operating Temperature	-10°C (14°F) ~ 60°C (140°F)
Plug Retention	50 N (11lbf) for 60 seconds
Mating Cycles	≥750 Cycles

**Electrical  
Characteristics**

Parameter	Value
Insulation Resistance	≥500MΩ at 100 V DC
Dielectric Withstanding Voltage	1000 V DC or AC at 60 Hz for 60 seconds
Current Resistance	≤20mΩ maximum
Current Rating	1.75 Amp at 20°C (68°F)