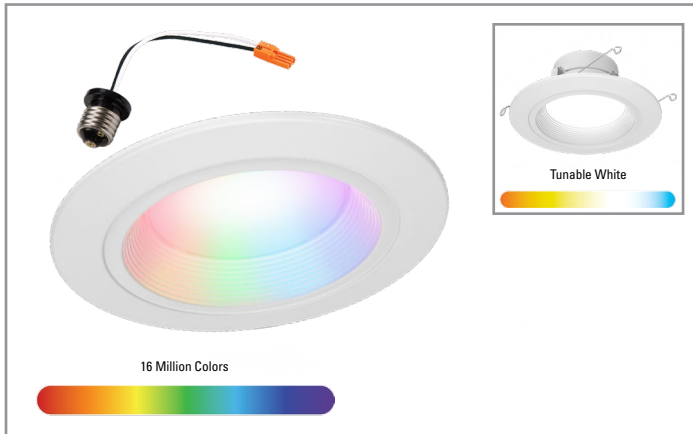


Project		Catalog #		Type	
Prepared by		Notes		Date	



HALO | WiZ PRO

RL56 | Smart Wi-Fi® LED Downlight

5/6-inch All-purpose full color & tunable white LED retrofit downlight with smart control from WiZ PRO

Typical Applications

Residential

Interactive Menu

- Order Information page 2
- Product Warranty page 2
- Product Specifications page 3
- Photometric Data page 4
- Energy & Performance Data page 4

Product Certification



Refer to ENERGY STAR® Certified Products List.
Can be used to comply with California Title 24 High Efficacy requirements.
Certified to California Appliance Efficiency Database under JAB.

air800

Product Features



Wireless Dimming



Wi-Fi + Bluetooth



Standard E26 Base



Wet or Damp Locations



Shows Natural Colors



Very Wide Angle

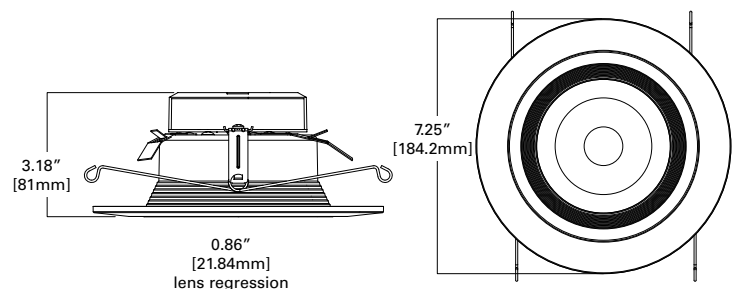
Top Product Features

- Smart Wi-Fi downlight with white tuning (2200K - 6500K) + 16 million colors + wireless dimming all via the WiZ App
- Configure and control lighting quickly with the WiZ App over Wi-Fi
- Pro Installers can use the WiZ Pro Setup App to manage multiple projects, pair over Bluetooth, and access advanced features in the WiZ Pro Dashboard.
- Fits most 5 in. and 6 in. housings with flexible mounting options (Includes Torsion Springs and Push-N-Twist clips + E26 Screw base adapter)
- ENERGY STAR® compliant | Wet location listed | UL Certified US and Canada | CA Title-20 & 24 high efficacy compliant
- Delivers 600 lumens; achieves L70 at 50,000 hours in IC and non-IC applications; 90CRI (min); R9 50 & color accuracy within 7SDCM with CCT between 2700-6500K

Product Integrations



Dimensions



Order Information

SAMPLE ORDER NUMBER: **RL56069WZRGBWWHR**

Models	Lumens	CRI/Control	Color/CCT	Finish	Packaging	Optional
Models	Lumens	CRI/CCT	Driver	Finish	Packaging	T20 Compliant
RL56 = 5 1/8" Smart Wi-Fi Retrofit LED Downlight Module	06 = 600 lumens (nominal)	9WZ = 90 CRI minimum, WiZ PRO-enabled (Wi-Fi + Bluetooth)	RGBW = Full Color (16 million colors) + Tunable White (2200K to 6500K) via WiZ App	WH = Matte white baffle	R = Recyclable	R = Standard Version
Notes	Notes	Notes	Notes	Notes	Notes	Notes

Accessories

Accessories

Designer Trims

RL56TRMWHB = 5/8" decorative overlay, white paintable, Baffle
RL56TRMSNB = 5/8" decorative overlay, satin nickel, Baffle
RL56TRMTBZB = 5/8" decorative overlay, tuscan bronze, Baffle
RL56TRMMBB = 5/8" decorative overlay, matte black, Baffle

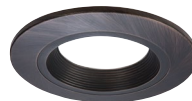
RL56TRMWH = 5/8" decorative overlay, white paintable, trim ring
RL56TRMSN = 5/8" decorative overlay, satin nickel, trim ring
RL56TRMTBZ = 5/8" decorative overlay, tuscan bronze, trim ring
RL56TRMMB = 5/8" decorative overlay, matte black, trim ring

Notes

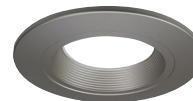
Decorative Baffle Overlays



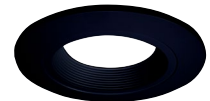
RL56TRMWHB
Matte White (Paintable)



RL56TRMTBZB
Tuscan Bronze



RL56TRMSNB
Satin Nickel



RL56TRMMBB
Matte Black

Decorative Smooth Splay Overlays



RL56TRMWH
Matte White (Paintable)



RL56TRMTBZ
Tuscan Bronze



RL56TRMSN
Satin Nickel



RL56TRMMB
Matte Black

Housings

Housings

The most common HALO housings are provided here. Along with those noted, the RL LED retrofits are UL Certified for use with any 5" or 6" diameter recessed housing constructed of steel or aluminum with an internal volume that exceeds 97.4 in.³ and does not exceed the input rating of the housing.

HALO LED 5-inch

H550ICAT = 5" LED, Insulated Ceiling, Air-Tite, New Construction Housing
H550RICAT = 5" LED, Insulated Ceiling, Air-Tite, Remodel Housing
E550ICAT = 5" LED, Insulated Ceiling, Air-Tite, New Construction Housing
E550RICAT = 5" LED, Insulated Ceiling, Air-Tite, Remodel Housing

HALO LED 6-inch

H750ICAT = 6" LED, Insulated Ceiling, Air-Tite, New Construction Housing
H750RICAT = 6" LED, Insulated Ceiling, Air-Tite, Remodel Housing
H750T = 6" LED, Non-IC, Air-Tite, New Construction Housing
H750TCP = 6" LED, Non-IC, New Construction/Remodel Chicago Plenum Housing
H2750ICAT = 6" LED, Shallow, Insulated Ceiling, Air-Tite, New Construction (use with 691X, 694X, 696X trims only)
H2750RICAT = 6" LED, Shallow, Insulated Ceiling, Air-Tite, Remodel (use with 691X, 694X, 696X trims only)
E750ICAT = 6" LED, Insulated Ceiling, Air-Tite, New Construction Housing
E750RICAT = 6" LED, Insulated Ceiling, Air-Tite, Remodel Housing

HALO LED retrofit

ML7E26RFK = 6" Retrofit Enclosure, Non-IC, E26 Screw base Interface
ML7BXRK = 6" Retrofit Enclosure, Non-IC, BX Whip

HALO Shallow Housings 5-inch

H25ICAT = 5" Shallow, Insulated Ceiling, Air-Tite New Construction
H25ICATNB = 5" Shallow, Insulated Ceiling, Air-Tite New Construction, No Socket Bracket

HALO Shallow Housings 6-inch

H27ICAT = 6" Shallow, Insulated Ceiling, Air-Tite New Construction
H27RICAT = 6" Shallow, Insulated Ceiling, Air-Tite Remodel Housing
H27T = 6" Shallow, Non-IC, New Construction Housing
H27RT = 6" Shallow, Non-IC, Remodel Housing
E27ICAT = 6" Shallow, Insulated Ceiling, Air-Tite New Construction
E27RICAT = 6" Shallow, Insulated Ceiling, Air-Tite Remodel Housing
E27TAT = 6" Shallow, Non-IC, New Construction Housing
E27RTAT = 6" Shallow, Non-IC, Remodel Housing

HALO Standard Housings 5-inch

H51CAT = 5" Insulated Ceiling, Air-Tite New Construction Housing
H51RICAT = 5" Insulated Ceiling, Air-Tite Remodel Housing
H51CATNB = 5" Insulated Ceiling, Air-Tite New Construction Housing, No Socket Bracket
H5T = 5" Non-IC, New Construction Housing
H5RT = 5" Non-IC, Remodel Housing
H5TNB = 5" Non-IC, New Construction Housing, No Socket Bracket
E51CAT = 5" Insulated Ceiling, Air-Tite New Construction Housing
E51RICAT = 5" Insulated Ceiling, Air-Tite Remodel Housing
E51CATNB = 5" Insulated Ceiling, Air-Tite New Construction Housing, No Socket Bracket
E5TAT = 5" Non-IC, New Construction Housing
E5RTAT = 5" Non-IC, Remodel Housing
E5TATNB = 5" Non-IC, New Construction Housing, No Socket Bracket

HALO Standard Housings 6-inch

H71CAT = 6" Insulated Ceiling, Air-Tite New Construction Housing
H71RICAT = 6" Insulated Ceiling, Air-Tite Remodel Housing
H71CT = 6" Insulated Ceiling, New Construction Housing
H71RICT = 6" Insulated Ceiling, Remodel Housing
H71CATNB = 6" Insulated Ceiling, Air-Tite New Construction Housing, No Socket Bracket
H71CTNB = 6" Insulated Ceiling, New Construction Housing, No Socket Bracket
H7T = 6" Non-IC, New Construction Housing
H7RT = 6" Non-IC, Remodel Housing
H7TNB = 6" Non-IC, New Construction Housing, No Socket Bracket
H7TCP = 6" Non-IC, Chicago Plenum, New Construction/Remodel Housing
H7UICAT = 6" Insulated Ceiling, Universal, Air-Tite, New Construction Housing
H71CAT = 6" Insulated Ceiling, Air-Tite New Construction Housing
E71RICAT = 6" Insulated Ceiling, Air-Tite Remodel Housing
E71CATNB = 6" Insulated Ceiling, Air-Tite New Construction Housing, No Socket Bracket
E7TAT = 6" Non-IC, New Construction Housing
E7RTAT = 6" Non-IC, Remodel Housing
E7TATNB = 6" Non-IC, New Construction Housing, No Socket Bracket

Product Specifications

Wireless System

- HALO with WiZ PRO products can be claimed using either the WiZ App or WiZ PRO Setup App.
- Compatible with all WiZ-enabled products.
- Max Devices/Account: 200

WiZ App Setup & Control

- HALO with WiZ PRO products can be claimed and controlled directly within the WiZ App.
- The WiZ App allows for control of lighting from home or away via Wi-Fi.
- Wirelessly control on/off, white tuning (2200K to 6500K), full color, and dimming (100% to 5%) using the WiZ App
- Android or Apple iOS compatible with most smartphones and tablets
- Setup Groups, Scenes, Schedules, and Rhythms to automate lighting.
- Integrates with Amazon Alexa, Hey Google, Siri Shortcuts, IFTTT, and SmartThings

WiZ PRO Control

- HALO with WiZ PRO also has claiming and account management features designed for the pro installer.
- Pros can use the WiZ Pro Setup App to claim products quickly using pre-Wi-Fi commissioning and manage multiple jobsites including transferring account ownership.
- The WiZ Pro Dashboard gives professional installers:
 - A clear overview to monitor lighting over a mapped location
 - Full range of configurations and remote control
 - Comprehensive reporting on device status & energy usage
- Learn more about WiZ PRO features and functionality at pro.wizconnected.com

WiZ Support

- HALO has partnered with WiZ as a third-party smart home system. All associated information and support for WiZ can be accessed via the **WiZ App**, **WiZ PRO Setup App**, **WiZ PRO Dashboard** or at wizconnected.com.

Control & Dimming

- These fixtures can be used with standard ON/OFF switches. (Do not use with any dimmers.)
- The **WiZ Click Feature** is a secondary control option, which uses your main light switch: toggle the switch on once to activate **Favorite Mode 1**, toggle twice for **Favorite Mode 2**.
- Wireless flicker-free dimming from 100%-5% via the WiZ App
- Only compatible with other WiZ-enabled products (Not compatible with HALO Home or any other controls.)

Power Cycle Behavior

- Unpaired WiZ fixtures will operate like a standard fixture until claimed into an account (2700K)
- **IMPORTANT:** If fixtures are hardwired with constant power or a user plans to always control them wirelessly instead of with a standard ON/OFF switch, use the Power Outage Recovery setting to prevent devices from turning back ON after a power outage. If fixtures are hardwired with constant power, use the Power Outage Recovery setting to prevent devices from turning back on after a power outage

Module - Trim

- Module construction includes LED Array, heat sink, reflector, lens, aluminum baffle and trim ring.
- Regressed baffle
- Heat sink designed to conduct heat away from the LED Array, keeping the junction temperatures below specified maximums, even when installed in insulated ceiling environments.

LED Array

- Delivers 600 lumens
- Mid power LED array provides a uniform source with high efficiency and no pixilation.
- 90 CRI minimum, R9 greater than 50
- 4 SDCM at 2700K and 7 SDCM up to 6500K
- Full color RGB LEDs also included to delivery 16 million color options
- 50K hour life: achieves L70 at 50,000 hours in IC and non-IC applications

Optical Assembly

- Regressed lens
- Impact-resistant polycarbonate
- Convex form and lamp-like appearance
- Diffuse for even illumination

Driver

- Integral 120V 60 Hz constant current driver provides noise free operation
- Inline orange electrical LED quick connect and E26 adapter (included) provides mains connections
- Refer to installation instructions for more information

Retention

- **2 Mounting Options:** Torsion springs are pre-installed with optional Push-N-Twist universal installation clips included to fit compatible 5" or 6" housings
- Refer to installation instructions for more information on installing

Decorative Overlays (sold separately)

- Decorative overlays are accessory trim rings that attach to fixture for a permanent finish. Options include baffle and smooth splay options in:
 - Matte White (Paintable)
 - Satin Nickel
 - Tuscan Bronze
 - Matte Black
- Refer to the **Accessories** section above for more details

Gaskets

- Closed cell gaskets achieve restrictive airflow requirements without additional caulking

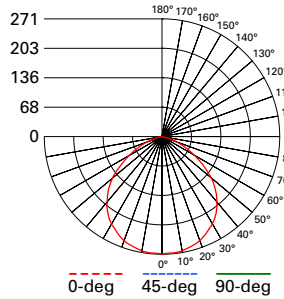
Compliance

- UL certified in US and Canada for use with HALO housings and other manufacturer's housings
- Wet location listed
- Airtight certified per ASTM-E283
- Suitable for use in clothes closets when installed in accordance with the NEC 410.16 spacing requirements
- EMI/RFI emissions per FCC 47CFR Part 15 consumer limits
- Contains no mercury or lead and RoHS compliant
- Photometric testing in accordance with IES LM-79-08
- Lumen maintenance projections in accordance with IES LM-80-08 and TM-21-11
- Can be used for State of California Title 24 high efficacy luminaire compliance. Complies with Title 24 JA8-2019-E.
- Title 20 Certified
- Can be used International Energy Conservation Code (IECC) high efficiency luminaire compliance.
- ENERGY STAR® Certified, reference database for current certifications
- FCC ID - 2AC7Z-ESP32SOLO1
- IC CODE - 21098-ESP32SOLO1

Warranty

- Five year limited warranty, consult website for details. cooperlighting.com/legal

Photometric Data



RL56069WZRGBWWHR (2700K)

Spacing criterion: (0-180) 1.26
 (90-270) 1.26
 (Diagonal) 1.35

Beam Angle: 106°

Field Angle: 149°

Lumens: 689.8

Input Watts: 8 W

Efficacy: 86.2 LPW

Test Report:

RL56069WZRGBWWHR-2700K.ies

Zonal Lumen	Lumens	% Lumens
0-30	209.2	30.3
0-40	341.8	49.5
0-60	586.6	85
0-90	689.8	100
90-180	0	0
0-180	689.8	100

TM-30-15	Rf = 93
	Rg = 103
CRI/CIE	Ra = 96
	R9 = 84

CCT - Range of 2200K- 6500K

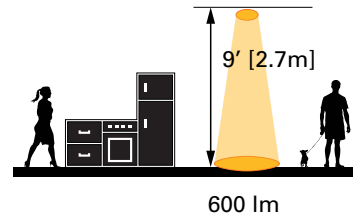


93°

Energy and Performance Data

RL56069WZRGBWWHR	
Lumens	736 @ 5000K
Input Voltage	120V
Input Frequency	60 Hz
Input Power	8W
Input Current	0.07 A
Power Factor	>0.90
THD	<20%
EMI/RFI	FCCTitle 47 CFR, Part 15, Class B (Consumer)
Sound Rating	Class A
Minimum Starting Temp	-30°C (-22°F)

Scale



Tested in accordance with IES LM63. Field results may vary.