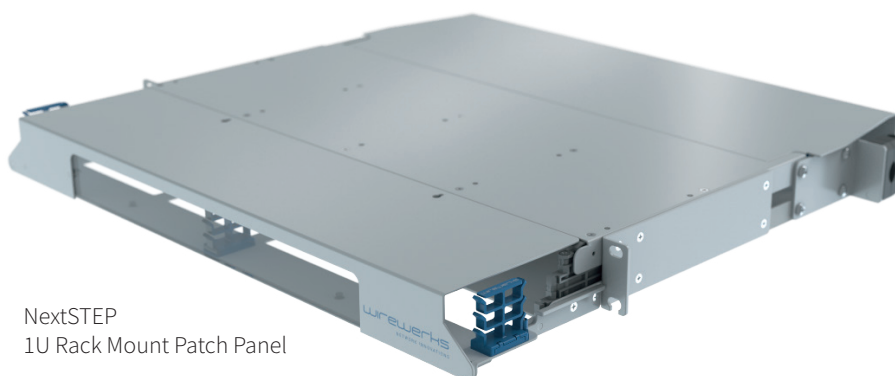


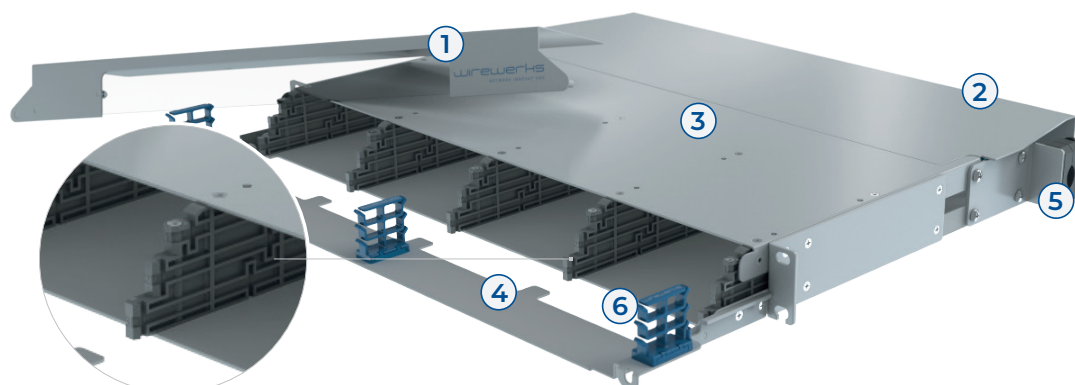
NEXTSTEP FIBER MANAGEMENT SYSTEM

OPTICAL FIBER 1U RACK MOUNT PATCH PANEL

PDS-0189



NextSTEP
1U Rack Mount Patch Panel



NextSTEP
exclusive 'stepped'
horizontal slot design

- 1. Front cover
- 2. Rear cover
- 3. Chassis
- 4. Front cable management bar
- 5. Rear cable management shelf
- 6. CableTree™ magnetic cable manager

DESCRIPTION

Wirewerks' **NextSTEP Technology™ Fiber Management System** is a complete solution for optical fiber operations and management in Data Center, Broadband and Enterprise applications. The NextSTEP™ system includes rack-mount patch panels, wall-mount enclosures and an FDF system (fiber distribution frame) that accept any combination of **NextSTEP Fiber Modules** and cassettes for fiber patching, distribution, splicing, splitter and WDM applications in virtually any fiber network application. Please contact us for more information and your copy of the complete **NextSTEP Solutions Brochure**.

Wirewerks' **NextSTEP™ 1U Rack Mount Patch Panel** features an industry-first horizontal slot design for mounting slide-in NextSTEP Fiber Modules and cassettes. Each horizontal slot is 'stepped' (offset) from adjacent slots, providing easy physical and visual access to any individual fiber module without disrupting other modules or fibers co-resident in the same panel.

NextSTEP 1U Patch Panels feature unrestricted front and rear access for easy installation and maintenance. The guide-rail system that secures each slide-in/out module into place features 'click in-place' stops that indicate when a module is properly seated in its correct operational position as well as partially withdrawn positions for easy technician access.

NextSTEP 1U Patch Panels are compatible with all NextSTEP Fiber Modules, and accept up to twelve (12) single-slot modules in any combination in any slot position. NextSTEP Modules slide in or out from the front or rear of the panel without tools -- making installations, MACs, and maintenance fast, easy and cost-effective.

Fiber counts in 1RU for typical configurations include up to 144F with LC/SC-Patch or Distribution Modules; up to 288F with Splice Tray Modules; and up to 1,152F with MPO Adapter Strip Modules.

The NextSTEP™ 1U Rack Mount Patch Panel is suitable for virtually any fiber networking application regardless of network topology, installation environment, fiber type, connector type, or fiber termination methodology.

Three Configurations to Match Customer Needs

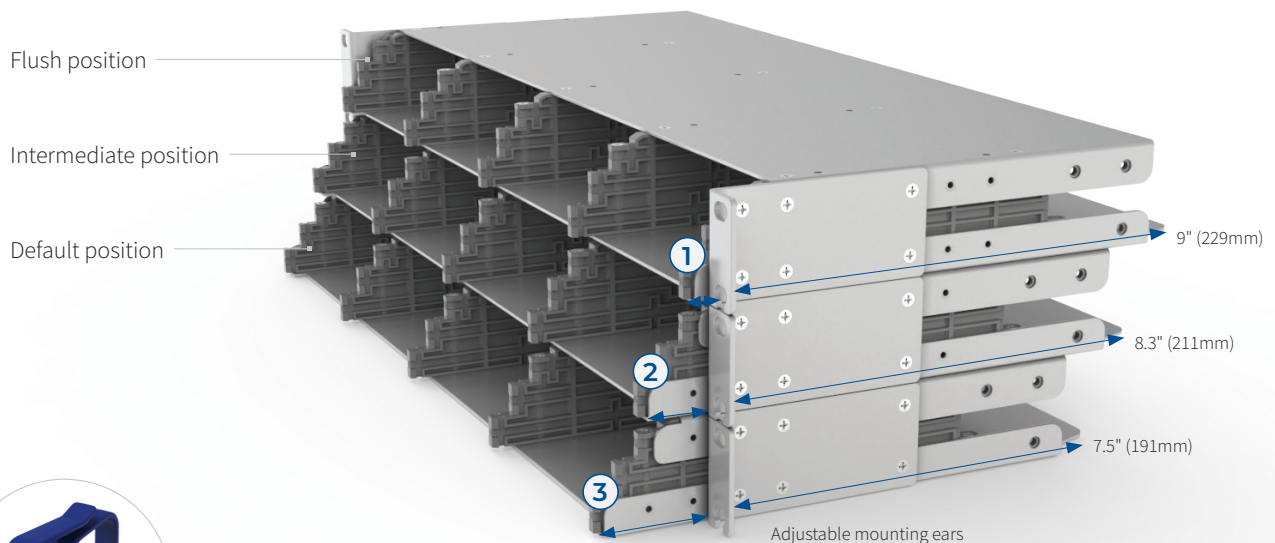
The NextSTEP 1U Rack Mount Patch Panel is available in **three configurations**. Each configuration may be field-modified to any other configuration for greater application flexibility, reduced parts/spares requirements and manageable cost control.

- The **'Standard'** configuration (NS-PP-W1U1) ships complete with front and back covers, installation hardware, 3 CableTrees, 3 CableBundles, and the CableGrip cable management accessories
- The **'Light'** configuration (NS-PP-W1U2) ships with installation hardware and CableTree & CableBundle magnetic cable management accessories; front and back panel covers are not included
- The **'Lean'** version (NS-PP-W1U1L) is ideal for top-of-rack and/or splice bay applications and ships with installation hardware; covers and cable management accessories are not included
- **CableTree™** and **CableBundle™** cable management accessories feature magnetic bases that allow infinite repositioning to provide customized fiber routing, strain-relief, and bend-radius protection. Technicians may relocate these devices as needed during installation and maintenance routines to control individual fibers and maintain fiber groupings.
- **CableGrip™** cable attachment devices replace zip-ties and provide secured cable entry for virtually any size/type of fiber cable. Precision, adjustable CableGrips support both loose-tube and tight-buffered cables, controlling fiber movement appropriately, without crushing cables and introducing performance-robbing micro-bends in fibers.

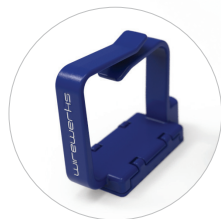
**FEATURES
and BENEFITS**

NextSTEP 1U Rack Mount Patch Panel Exclusive Features and Benefits

- Three field-upgradable configurations to best suit different applications and control costs
- Horizontal 'stepped' slot design increases accessibility for **manageable high density**
- Adjustable rack-mount ears allow variable control of panel's depth in racks and cabinets for greater installation flexibility and accessibility

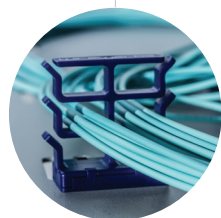
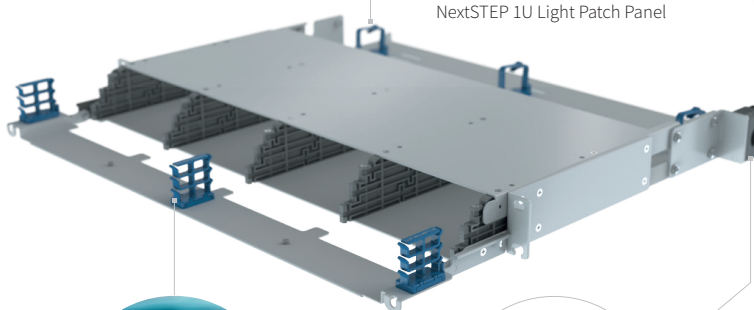


NextSTEP 1U Lean panel dimensions:
1. Front to rack-mount ear: 0.4" (10.2mm)
2. Front to rack-mount ear: 1.2" (30.5mm)
3. Front to rack-mount ear: 1.9" (48.2mm)



CableBundle™

NextSTEP 1U Light Patch Panel



CableTree™



CableGrip™

- **CableBundle™** and **CableTree™** cable management accessories feature magnetic bases that allow infinite repositioning to provide customized and guided fiber routing, strain-relief, and bend-radius protection. Technicians may relocate these devices as needed during installation and maintenance routines to control individual fibers and maintain fiber groupings.
- **CableGrip™** cable attachment devices replace zip-ties and provide secured cable entry for virtually any size/type of fiber cable. Precision, adjustable CableGrips support both loose-tube and tight-buffered cables, controlling fiber movement appropriately, without crushing cables and introducing performance-robbing micro-bends in fibers.

**FEATURES
and BENEFITS**

- Horizontal ‘stepped’ slot design improves visual and physical access to modules and fiber management features
- High-density fiber counts save space and reduce costs:
 - Up to 144F in Patch/Distribution Modules with LC/SC connectors
 - Up to 288F in Splice Tray Modules (12/24F ribbon or single fiber)
 - Up to 1,152F with MPO Adapter Strip Modules
- Full support for all fiber applications, connectors and termination methods:
 - Pre-terminated/Plug & Play (Factory-sealed Distribution Modules; LC, SC and MPO Adapter Strip Modules; FLEX Modules)
 - Field-terminated fusion slicing (Patch Module)
 - Pigtail fusion splicing (Patch Module)
 - Ribbon-cable, single fiber fusion splicing (Splice Tray)
 - C/D-WDM Modules
 - Splitter Modules
 - Splice Bay (Splice Tray Modules)
- Adjustable rack-mount ears allow depth control of panel in racks and cabinets
- Complete front and back panel access to all modules
- Slide-in/out modules: no tools required
- Front/Rear Covers are easily removed/replaced without tools for greater accessibility and easier, faster installation and maintenance routines
- Labeling space for easy, accurate port identification
- Complete installation hardware and Instruction Manual
- CableTree™ magnetic cable management accessories for fiber routing, management, and strain-relief
- CableGrip™ cable attachment device secures cable entry; eliminates cable-ties that may cause performance degrading micro-bends in fibers

APPLICATIONS

Vertical Markets
Data Centers
Enterprise, Healthcare, Education, Financial, Government and other premise/campus network applications
Broadband/MSO/Carrier wireline and wireless networks

**ORDERING
INFORMATION**

Part Number *	Description	Model
NS-PP-W1U1	NextSTEP™ 1U Rack Mount Patch Panel	Standard
NS-PP-W1U2	NextSTEP™ 1U Rack Mount Patch Panel	Light
NS-PPW1U1L	NextSTEP™ 1U Rack Mount Patch Panel	Lean

*Other configurations available upon request.

INCLUDED

Part Number	Included
NS-PP-W1U1 Standard Model	Front and rear covers Front and rear management bars Self-adhesive identification label, 4.0" x 2.0"; 1 sheet of 10 labels 2 x danger/caution safety magnets 4 x machine screw 12-24, 1/2" long, Philips head 4 x machine screw 10-32, 1/2" long, Philips head 1 x CableGrip Strain Relief Bracket 4 x pan head Phillips machine screw, M4x0.7, 6mm length 3 x CableTree™ magnetic cable managers 3 x CableBundle magnetic cable managers
NS-PP-W1U2 Light Model	As above without front/rear covers
NS-PP-W1U1L Lean Model	As above without front/rear covers, front/rear management bars, CableTree™ and CableBundle™ magnetic cable managers

PACKAGING and SHIPPING

Description	Standard Model NS-PP-W1U1	Light Model NS-PP-W1U2	Lean Model NS-PP-W1U1L
Packaging	Cardboard box: 1 unit/box		
Shipping Weight	12.8lbs (5.8kg)	9.6lbs (4.3kg)	6.1lbs (2.75kg)

PHYSICAL SPECIFICATIONS

Attribute	Standard Model NS-PP-W1U1	Light Model NS-PP-W1U2	Lean Model NS-PP-W1U1L
Dimensions	19" x 1.73" x 17.7" (482mm x 44mm x 450mm)		19" x 1.73" x 9.5" (482mm x 44mm x 239mm)
Weight	9.6lbs (4.35kg)	6.2lbs (2.81kg)	4.7lbs (2.13kg)
Plastic Materials	UL 94V-0 thermoplastic		
Panel Materials	18, 16 & 13 gauge cold rolled steel (CRS)		
Panel Finish	Silver Cloud powder paint		

MECHANICAL SPECIFICATIONS

Parameter	Value
Operating Temperature	-40° to 75°C (-40° to 167°F)
Storage Temperature	-40° to 75°C (-40° to 167°F)

STANDARDS COMPLIANCE

ANSI/TIA-942-B

Telecommunications Infrastructure Standard
for Data Centers

ANSI/TIA-568-C.3

Optical Fiber Cabling Components Standard

TIA-569-E

Commercial Building Standard
for Telecommunications Pathways and Spaces

EIA/ECA-310-E

Cabinets, Racks, Panels and
Associated Equipment standard

ANSI/TIA/EIA-606-C

Administration Standard
for Telecommunications Infrastructure

GR-449-CORE

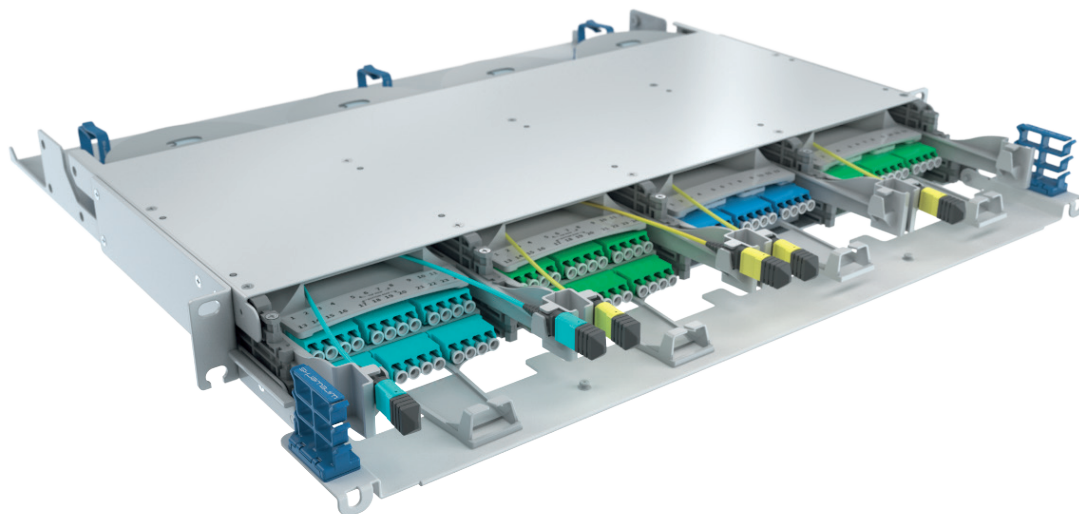
Generic Requirements and Design Consideration
for Fiber Distributing Frames

UL 94

Tests for Flammability of Plastic Material
for Parts in Devices

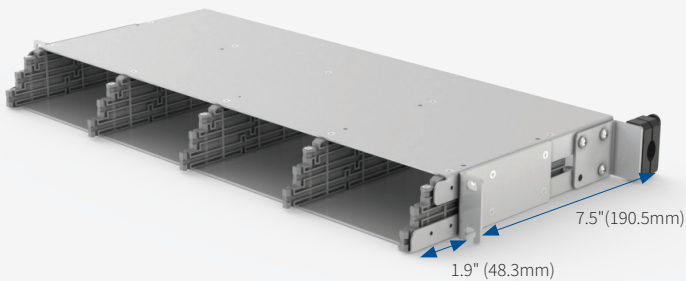
RoHS

Directive on Restriction of Hazardous Substances



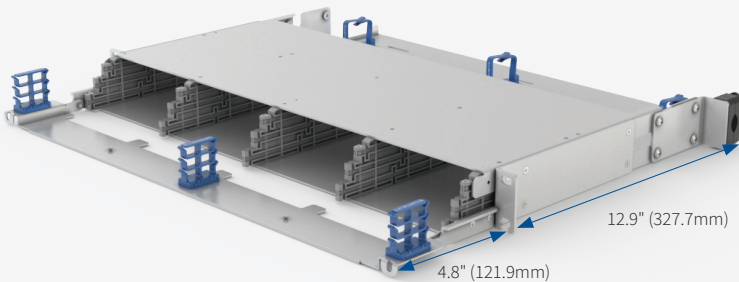
CONFIGURATIONS

The NextSTEP 1U High-Density Patch Panel may be ordered in three field-upgradeable configurations, providing cost-effective initial deployments with a path to future growth and changing applications built in.



Lean

Ideally suited to top-of-rack Data Center environments. Ships complete with installation hardware; front/rear covers and cable management accessories not included.



Light

Ships with installation hardware and CableTree magnetic cable management sub-system; front and rear covers not included.



Standard

Ships complete with front and rear covers, CableTree magnetic cable management sub-system, and installation hardware.