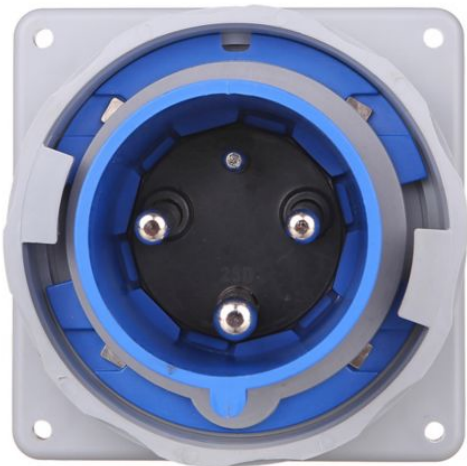


Eaton AH360B6WDR

Catalog Number: AH360B6WDR

Eaton Arrow Hart pin and sleeve inlet, IP69K Rated, 60/63A, 60A 250V/63A 200-250V, two-pole, #8 - #2 AWG, #10 - #2 AWG (Ground), #12 - #16 AWG (Pilot), nickel plated brass, 3 wire



General specifications

Product Name	Catalog Number
Eaton Arrow Hart pin and sleeve inlet	AH360B6WDR
UPC	Product Length/Depth
032664006692	4.77 in
Product Height	Product Width
4.5 in	4.5 in
Product Weight	
1.34 lb	

Special features

IP69K Rated

Type

Inlet

Amperage Rating

60/63A

Voltage rating

60A 250V/63A 200-250V

Contact material

Nickel plated brass

Number of wires

3

Grounding

Number Of Poles

Two-pole

Environmental resistance

IP69K

IP67

Allowable wire size

#8 - #2 AWG, #10 - #2 AWG (Ground), #12 - #16 AWG (Pilot)

Design type

Pin and sleeve inlet

Face/body material

Nylon

Brochures

Eaton's Arrow Hart Dual rated pin and sleeve devices

Specifications and datasheets

60A Dual Rated pin and sleeve devices spec sheet