

PRODUCT OVERVIEW

Adjustable mud rings

A quick, easy solution for a common rough-in problem.

Steel City®



Now there's a quick and economical way to ensure that stud-mounted outlet boxes fit flush with finished drywall, plaster or ceramic tile. New Steel City® adjustable mud rings have an inner ring that adjusts in depth to accommodate various drywall thicknesses. The inner ring can be set to the anticipated depth and then easily adjusted after drywall installation.

Features and benefits

- Single mud ring can replace multiple SKUs for different depths
- Available in models for one-gang, two-gang, three-gang and round boxes
- Mount to any standard 4"-square 2½" deep outlet box, such as Steel City 521711234E
- Accepts industry-standard devices, including GFCIs
- Pre-galvanized steel construction
- UL listed component
- Not intended for 1½" deep boxes

Typical applications

- Outside firewalls in hotel, casino and residential high-rise structures
- Ceramic tile walls
- Any other application in which a stud-mounted box and mud ring may require depth adjustment prior to final trim work



—
52CADJ1510



—
52CADJ2512



—
54CADJ612

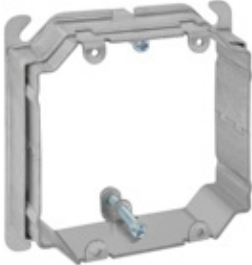
Steel City® adjustable mud rings



52CADJ1510



52CADJ1612



52CADJ2512



52CADJ3612



54CADJ612

Adjustable mud ring installation and adjustment

- 1

Mount mud ring to steel box.
- 2

Move mud ring in or out using adjustment screws. No loosening or tightening required.
- 3

Adjustment screws are accessible after device is in place for easy fine tuning.

Steel City® adjustable mud rings



Catalog no.	Description	Std. pkg. qty.	UPC no.
52CADJ1510	Single-gang, shallow, 5⁄8" to 1 1⁄4" adjustment depth	25	782980010247
52CADJ1612	Single-gang, deep, 3⁄4" to 1 1⁄2" adjustment depth	25	782980010254
52CADJ2512	Two-gang adjustable mud ring, 5⁄8" to 1 1⁄4" adjustment depth	25	782980010261
52CADJ3612	Three-gang adjustable mud ring, 3⁄4" to 1 1⁄2" adjustment depth	25	782980010278
54CADJ612	4" round adjustable mud ring, 3⁄4" to 1 1⁄2" adjustment depth	25	782980010285
52CADJ	Single-gang adjustable mud ring, 1⁄2" to 1 1⁄2" adjustment depth	25	785991044546

ABB Installation Products Inc.
Electrification Business
860 Ridge Lake Blvd.
Memphis, TN 38120

electrification.us.abb.com

ABB has made every attempt to ensure the accuracy and reliability of the contents of this document. However, all content is provided for general informational purposes only, and ABB makes no guaranty or warranty, express or implied, as to the accuracy of any technical content, or that the information contained in this publication will be error free and all such guarantees or warranties are expressly

disclaimed. ABB may change or modify the contents at any time, without prior notice. We reserve all rights in this document and in the subject matter and illustrations contained therein. Any reproduction or utilization of its contents — in whole or in parts — is forbidden without prior written consent of ABB.
© 2025 ABB Installation Products Inc. and/or its related companies All rights reserved