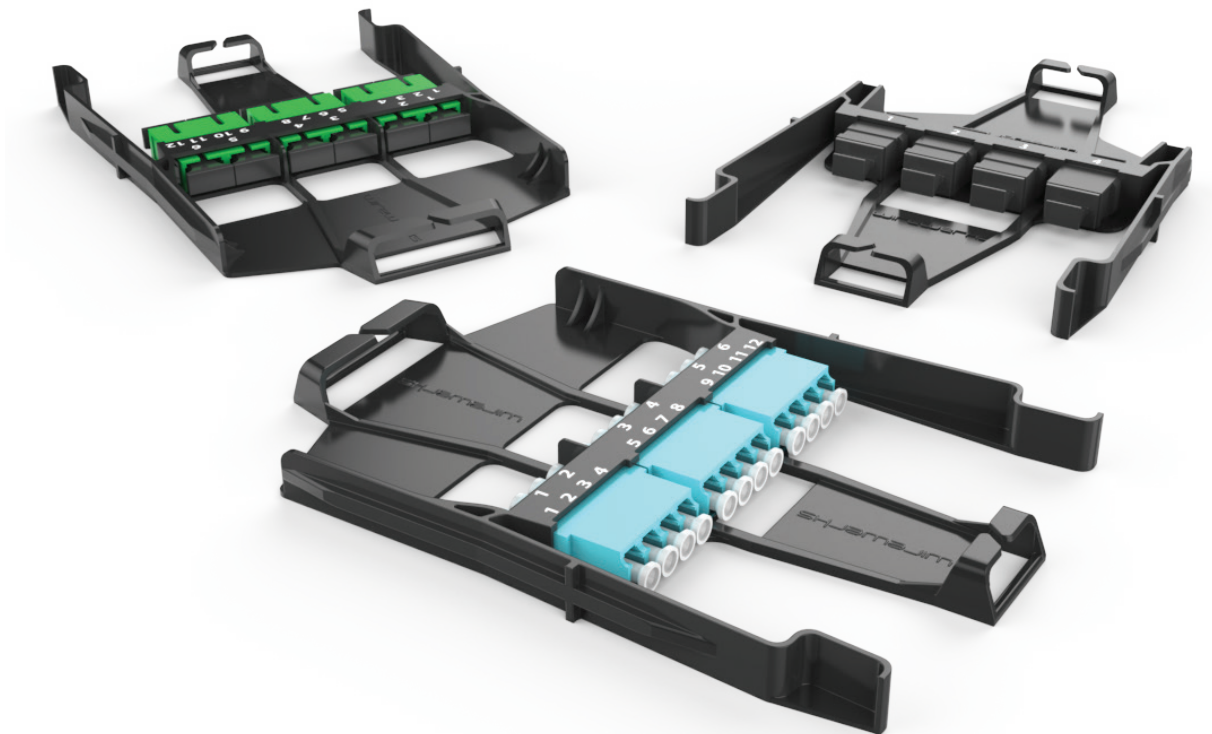


NEXTSTEP™

ADAPTER STRIP MODULE

PDS-0233



DESCRIPTION

The Wirewerks **NextSTEP™ Adapter Strip Module** is a plug-and-play patch module intended for the high-density fiber networking applications found in today's data centers, SANs, LANs and similar environments.

NextSTEP Adapter Strip Modules include a robust, open-design high-impact ABS thermoplastic frame that provides a stable, rigid installation platform for a choice of factory-mounted, high-performance MPO-MPO adapters, LC-LC quad adapters, or SC-SC duplex adapters. The open-frame design allows for fast, easy visual and physical access to the connectors, and Adapter Strip Modules may be inserted or removed from the front or rear of any NextSTEP rack-mount or wall-mount chassis without tools for rapid, simple installation and maintenance routines.

Incoming fiber assemblies typically enter the Adapter Strip from the rear and connect to one side of the female-female adapters, allowing various pass-through or cross-connect options at the front of the module using patch cables, assemblies or harnesses. Integrated cable management features at the front and rear of each module control fiber routing and work in concert with the award-winning fiber management features found in all NextSTEP chassis and enclosures.

NextSTEP Adapter Strip Modules may be mixed with any other type of NextSTEP Module in any NextSTEP patch panel or enclosure for design flexibility, space and cost savings.

NextSTEP Adapter Strip Module: MPO-MPO

The MPO-MPO version provides a proven solution for parallel optic network designs and 40/100GbE transmission protocols in data centers, SANs and other high-speed applications.

Each module provides four (4) 12/24F MPO connectors supporting up to 96 fibers per Adapter Module and up to 1,152F/4,608F in 1U/4U NextSTEP rack-mount patch panels.

NextSTEP Adapter Strip Module: LC-LC

The LC-LC version provides three (3) LC-LC quad adapters per module supporting up to 12 fibers per module, and up to 144F/576F in 1U/4U NextSTEP rack-mount patch panels.

The singlemode or OM3/OM4 multimode factory-mounted LC-LC adapters in each module utilize high-strength, low insertion loss zirconia ceramic sleeves for superior performance and reliability.

NextSTEP Adapter Strip Module: SC-SC

The SC-SC version provides three (3) SC-SC duplex adapters per module supporting up to 6 fibers per module, and up to 72F/288F in 1U/4U NextSTEP rack-mount patch panels.

The singlemode or OM3/OM4 multimode factory-mounted SC-SC adapters in each module utilize high-strength, low insertion loss zirconia ceramic sleeves for superior performance and reliability.

**FEATURES
and BENEFITS**

- Precision engineered and manufactured from high-impact ABS thermoplastic for strength and durability
- High-performance Wirewerks MPO-MPO, LC-LC, SC-SC mating sleeve adapters factory-mounted in each module for reliable, plug-and-play fiber connections
- Open-design (versus cassette-style) module allows fast, easy visual inspection and physical access to connectors
- Permanent, factory-mounted adapters within the module virtually eliminate movement in mated connections and allow fast, simple out-of-the-box installation
- Easy, tool-less slide-in/slide-out installation/removal from either the front or rear of any NextSTEP chassis for rapid, simple installation/maintenance
- Low Insertion Loss (IL) to minimize impact on loss budgets
- Mix with other NextSTEP Modules on any NextSTEP chassis for design flexibility, space and cost savings
- Integrated fiber management in each module

APPLICATIONS

Vertical Markets	Value
Data Centers	Entrance Facility
SANs	Telecom Room
Enterprise LANs	Equipment Room
	Consolidation Point
	Central Office
	MDA

ORDERING
INFORMATION

Part Number	Description
NS-ASW B CC D	NextSTEP™ Adapter Strip

NS = NextSTEP, AS = Adapter Strip, **Example:** NS-ASWL12G = LC Quad OM3/OM4 NextSTEP Adapter Strip 12 Fiber

Adapter Type		Fiber Count		Performance & Design	
L	LC	06	6 Fiber	M	OM1/OM2 Multimode Beige
C	SC	12	12 Fiber	G	OM3/OM4 Multimode Aqua
M	MPO	48	48 Fiber	S	UPC Single Mode Blue
				A	APC Single Mode Green
					Not Applicable for MPO – Leave this field blank when configured for MPO

PACKAGING
and SHIPPING

Description	Dimensions	Weight
Blister Pack	7.25" x 11.38" x 1.00" (184mm x 289mm x 25mm)	0.25lbs

PHYSICAL
SPECIFICATIONS

Attribute	Value
Dimensions	6.50" x 4.30" x 0.49" (165mm x 109mm x 12.5mm)
Weight	0.10lbs
Materials (plastics, metals, etc.)	UL 94V-0 high-impact ABS Thermoplastic
Color & Finish	Black

MECHANICAL
SPECIFICATIONS

Parameter	Value
Operating Temperature	-40° to 75°C (-40° to 167°F)
Storage Temperature	-40° to 75°C (-40° to 167°F)
Temperature Cycling	-40° to 75°C (-40° to 167°F) (40 cycles = 0.2dB change)
Mating Cycling	500 mating cycles (clean every 25 cycles ≤ 0.2dB change)
Damp Heat	40°C (104°F) at 93% RH for 96 hours ≤ 0.4dB change
High Temperature	70°C for 96 hours ≤ 0.4dB change

PERFORMANCE
SPECIFICATIONS

Parameter	Value
Insertion Loss (IL)	≤0.3dB *Only applicable for MPO: Optical performance dependent on connector's alignment guide pins tolerance, compliant with TIA-604-5

**STANDARDS
COMPLIANCE**

ANSI/TIA-942-A

Telecommunications Infrastructure Standard
for Data Centers

ANSI/TIA-568-C.3

Optical Fiber Cabling Components Standard

TIA-604 Series

Fiber Optic Connector Interchangeability Standard

TIA-455 Series

Standard Test Procedure for Fiber Optic
Components

IEC 60874-1

Connectors for Optical Fibers and Cables –
Generic Standard

IEC 61300 Series

Fiber Optic Interconnecting Devices and Passive
Components – Basic Test and Measurement
Procedures

GR-326-CORE

Generic Requirements and Design
Consideration for Fiber Distributing Frames

UL 94

Tests for Flammability of Plastic Material for
Parts in Devices

RoHS

Directive on Restriction of Hazardous Substances