

## Individual Spec Sheet

# LPDL™ CCT SELECTABLE GEN. 2

## LOW PROFILE DOWNLIGHT

### 5 CCT Selectable

### ORDERING INFORMATION

**Order code:** 70130  
**Model number:** LPDL4R-S2-7.5A-5CBN  
**UPC:** 069549032026  
**Case quantity:** 12

### PHYSICAL DATA

**Size in (cm):** 4 7/8 (12.4) x 3/4 (1.9)  
**Shape:** Round  
**Finish:** Brushed nickel  
**Lens Type:** Frosted polycarbonate  
**Mounting:** Recessed

### PERFORMANCE DATA

**Watts (W):** 7.5  
**Volts (V AC):** 120  
**Color temperature (K):** 2 700/3 000/3 500/4 000/5 000  
**Lumen output (lm):** 620  
**Efficacy (lm/W):** 83  
**CRI:** 90+  
**Life L70 (h):** 50 000  
**Beam angle (°):** 110  
**Environment:** Wet location  
**THD (%):** <20  
**Power factor:** >0.9  
**Cable rating:** FT6  
**Frequency (Hz):** 60  
**Operating temp. range:** -30 °C to 45 °C (-22 F° to 113 °F)  
**Dimmable:** Phase cut (ELV / Triac)

<sup>1</sup> Typical colour temperature range: +/- 5 %.

<sup>2</sup> Lumen values are derived from Energy Star reported data. Initial lumens range: +/- 10 %.

<sup>3</sup> Life hours are derived from IESNA LM-80 testing report and projected per IESNA TM-21 extrapolations.

### LUMEN SPECIFICATION TABLE

Watts (W)	2 700 K		3 000 K		3 500 K		4 000 K		5 000 K	
	Lumen output (lm)	Efficacy (lm/W)	Lumen output (lm)	Efficacy (lm/W)	Lumen output (lm)	Efficacy (lm/W)	Lumen output (lm)	Efficacy (lm/W)	Lumen output (lm)	Efficacy (lm/W)
7.5	649.2	86.6	660.3	88.0	681.5	90.9	689.7	92.0	697.3	93.0

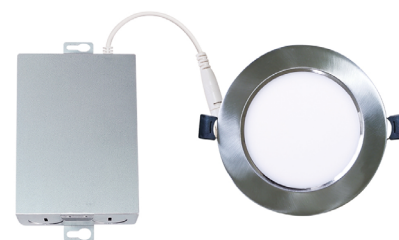
### DEFAULT PROGRAMMING

2 700 K

This lighting equipment meets requirements of ICES-005 issue 5 class B for use in residential applications.

Data is based upon tests performed in a controlled environment.

Actual performance can vary depending on operating conditions. Specifications are subject to change without notice.



**COMPATIBLE ACCESSORIES**

Order code	Model number	Type
66821 <sup>1</sup>	ACC/MPLATE/4.25IN/HANG.BARS/STD	Mounting plate with hanger bars
66058	ACC/MPLATE/4.25/ADJ/STD	Adjustable mounting plate
66051	ACC/MPLATE/4.25/SQR/STD	Square mounting plate
66143	ACC/4/VAPOR BARRIER/STD	Vapor barrier extender
68986 <sup>3</sup>	GOOF RING-4.25IN	Goof rings
64264 <sup>2</sup>	LPDL/ACC/6FT/EXTCABLE/STD	6' extension cord

<sup>1</sup> Includes brackets and screws.

<sup>2</sup> Up to 6 FT6 extension cords can be connected together.

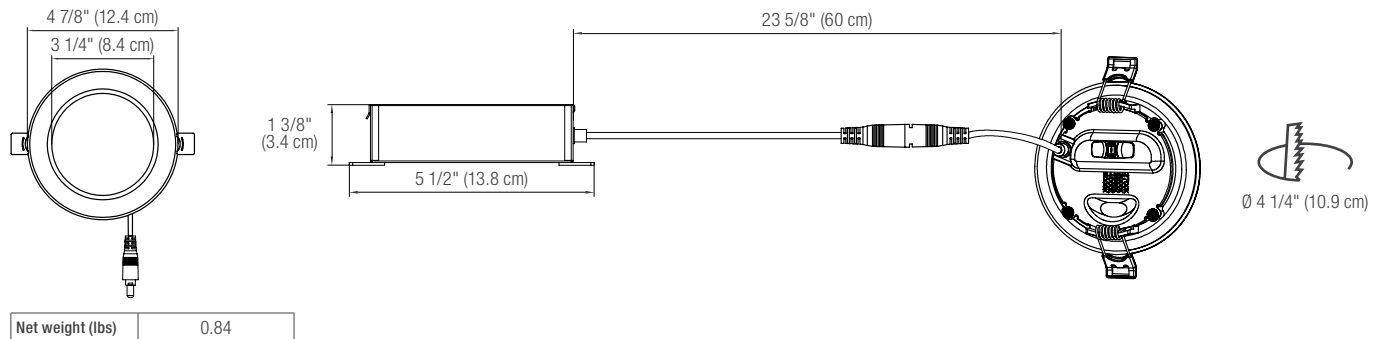
**COMPATIBLE DIMMERS<sup>1</sup>**

Brand	Model
Legrand	RH730PTUTC
Cooper	AAL06, DAL06P, SAL06P3
Leviton	6674, DDMX1, DSL06-1LZ, DSM10-1LZ, IPE04-1LZ, IPL06
Lutron	AYCL-253P, DVCL-153P, DVCL-253P, DVELV-300P, HCL453P, MACL-153P, PD-6WCL, SELV-300P

<sup>1</sup> This table shows dimmers that have been tested and have demonstrated proper operation under normal conditions. Each installation being unique, various factors such as load, common neutrals or other electrical products on the circuit can, in certain instances, cause variance in system performance. Read and comply to the dimmer installation instructions. Consult dimming system manufacturer for additional support in operation. Some dimmers may require more than one product for stable operation. Stanpro recommends to use dimmers designed to work with LED products. Older dimmers designed for incandescent products may cause erratic operation.

Dimming range: 10%-100%

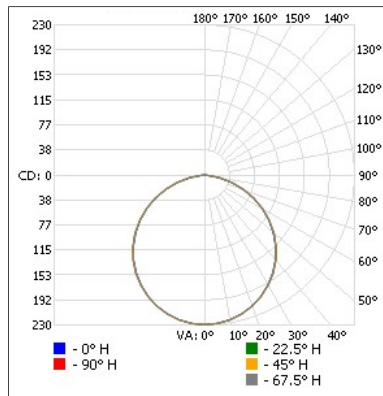
**DIMENSIONS AND WEIGHT**



**PHOTOMETRIC DATA<sup>1</sup>**

70130 • LPDL4R-S2-7.5A-5CBN • 3 000K • 660.3 lm

**Polar candela distribution**



**Zonal lumen summary**

Zone	Lumens	% Fixture
0-30	178.3	27
0-40	292.6	44.3
0-60	519.9	78.7
60-90	136.8	20.7
70-100	54.9	8.3
90-120	0.7	0.1
0-90	656.6	99.4
90-180	3.7	0.6
0-180	660.3	100

**Illuminance at a distance**

Center beam fc		Beam width	
1.7'	79.3	5.1'	5.2'
3.3'	21.1	10.0'	10.1'
5.0'	9.17	15.1'	15.2'
6.7'	5.11	20.3'	20.4'
8.3'	3.33	25.1'	25.3'
10.0'	2.29	30.3'	30.5'

■ Vert. spread : 113.1°  
■ Horiz. spread : 113.4°

<sup>1</sup> Complete IES files available on our website.

Qty	Description	Price

I accept the specifications of the luminaire configuration mentioned above.

Name: \_\_\_\_\_  
 Company: \_\_\_\_\_  
 Signature: \_\_\_\_\_

Date: \_\_\_\_\_

Data is based upon tests performed in a controlled environment. Actual performance can vary depending on operating conditions. All products are subject to change or may be discontinued any time without notice. Please contact your Stanpro customer service representative to confirm inventory levels at time of order.