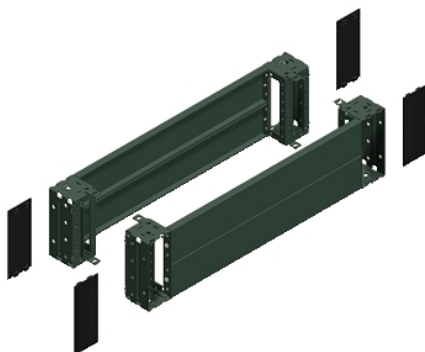


NSYSPF6200

Front & rear plinth, PanelSeT SFN, Spacial SF, Spacial SM, for electrical enclosure W600mm, plinth H200mm



Main

Range	Spacial
Accessory / separate part category	Enclosure accessory
Product or Component Type	Plinth front
Anwendung	PC application Electronic application Multi-purpose Compartmentalised application
Nennmaße des Gehäuses	-
Device composition	Fixing elements 4 corner cover 4 corner 2 front panel 2 rear panel
Range compatibility	Spacial Spacial SF Spacial Spacial SM Spacial Spacial SD Spacial Spacial S3D Spacial Spacial CRN
Mounting support	Plinth side panels

Complementary

Fixing mode	By fixing element - on structure
Color	Gray RAL 7022)
Surface Finish	Epoxy-polyester powder
Permanent permissible load	2866.01 lb(US) (1300 kg)
Height	7.87 in (200 mm)
Width	Nominal 23.62 in (600 mm)

Environment

IP degree of protection	IP30 complete plinth)
IK degree of protection	IK10

Ordering and shipping details

Category	80036-ENCLOSURE SYSTEMS ACCESSORIES
Discount Schedule	ES1
GTIN	3606485126678
Returnability	No
Country of origin	TN

Packing Units

Unit Type of Package 1	PCE
Number of Units in Package 1	1
Package 1 Height	7.87 in (20.000 cm)
Package 1 Width	8.27 in (21.000 cm)
Package 1 Length	24.21 in (61.500 cm)

Package 1 Weight	16.16 lb(US) (7.328 kg)
Unit Type of Package 2	P12
Number of Units in Package 2	32
Package 2 Height	35.43 in (90.000 cm)
Package 2 Width	31.50 in (80.000 cm)
Package 2 Length	47.24 in (120.000 cm)
Package 2 Weight	543.43 lb(US) (246.496 kg)

Offer Sustainability

Sustainable offer status	Green Premium product
REACH Regulation	 REACH Declaration
EU RoHS Directive	Pro-active compliance (Product out of EU RoHS legal scope)
Mercury free	Yes
China RoHS Regulation	 China RoHS Declaration
RoHS exemption information	 Yes
Environmental Disclosure	 Product Environmental Profile
Circularity Profile	No need of specific recycling operations

Contractual warranty

Warranty	18 months
----------	-----------