

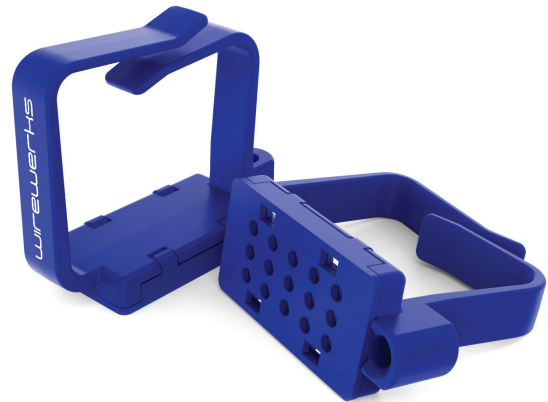
NEXTSTEP™

CABLETREE™ & CABLEBUNDLE™ MAGNETIC CABLE MANAGERS

PDS-0209-EN-D



CableTree™



CableBundle™

DESCRIPTION

NextSTEP™ CableTree™ and **NextSTEP™ CableBundle™** devices are innovative cable management accessories that provide the most flexible cable routing and management capabilities in the industry today. CableTree and CableBundle managers utilize magnetic mounts making them infinitely repositionable within NextSTEP Patch Panels, allowing cable management solutions that are individually customized to the unique needs of each installation. The magnetic mounts are precision engineered to release from their mounting position if cable tension exceeds threshold, providing effective strain-relief and protection against strain-related damage to delicate optical fibers.

The **NextSTEP™ CableTree™** is designed with six compartments, with each compartment managing up to 12 fibers. This conforms to the NextSTEP System's overall design philosophy of organizing fibers into easy-to-identify, segregated groups of 12F for more efficient, less intrusive installation and MAC activities.

The **NextSTEP™ CableBundle™** is designed with a single larger compartment and is intended for use in routing and managing multi-fiber cables and cable assemblies.

Both types of repositionable, reusable NextSTEP magnetic cable managers allow technicians to manage the fiber population for maximum efficiency and control during installation and maintenance activities, and then easily adjust/reposition the cable managers for optimum routing and strain-relief in operational environments.

NextSTEP CableTree and CableBundle managers are precision manufactured from high-impact ABS thermoplastic for strength and durability in all installation environments.

FEATURES
and BENEFITS

- Precision engineered magnetic mounts attach anywhere within NextSTEP Patch Panels and rack systems
- Infinitely repositionable for optimal cable routing customized for each installation
- Magnetic mounts release if tension exceeds threshold, providing strain-relief and fiber protection
- 'Attach anywhere' magnetic mounts assist technicians in organizing fibers during installations and MACs, and then easily relocate for optimal final fiber routing
- High-impact plastic material for strength, durability and long-life

APPLICATIONS

Vertical Markets	Installation Environments
Data Centers/SANs	Entrance Facility
Enterprise LANs	Telecom Room
MSO/Broadband Networks	Equipment Room
Any installation that uses NextSTEP™ Patch Panels	Consolidation Point
	Central Office

**ORDERING
INFORMATION**

Part Number	Description
NS-CBLMGT-BL	NextSTEP™ Cable Tree, Blue Magnetic Cable Manager
NS-BDLMGT-BL	NextSTEP™ CableBundle™ Magnetic Cable Manager

**PACKAGING
and SHIPPING**

Description	Dimensions	Shipping Weight
Zip lock Poly Bag; 1 unit/bag	2.75" x 3.50" (70mm x 89mm)	0.022 lbs (0.010 kg)

**PHYSICAL
SPECIFICATIONS**

Attribute	NS-CBLMGT-BL	NS-BDLMGT-BL
Dimensions	1.40" x 1.31" x 0.63" (36mm x 33mm x 16mm)	1.64" x 1.31" x 0.63" (42mm x 33mm x 16mm)
Weight	0.020lbs (0.009kg)	0.020lbs (0.009kg)
Plastic Materials	UL 94V-0 high-impact thermoplastic	
Color	Blue	

**MECHANICAL
SPECIFICATIONS**

Parameter	Value
Operating Temperature	-40° to 75°C (-40° to 167°F)
Storage Temperature	-40° to 85°C (-40° to 185°F)

**STANDARDS
COMPLIANCE**

RoHS
Directive on Restriction of Hazardous Substances

NEXTSTEP™

CABLETREE™ & CABLEBUNDLE™ MAGNETIC CABLE MANAGERS

PDS-0209-EN-D

